

Embargoed until 10:45am – 19 November 2007

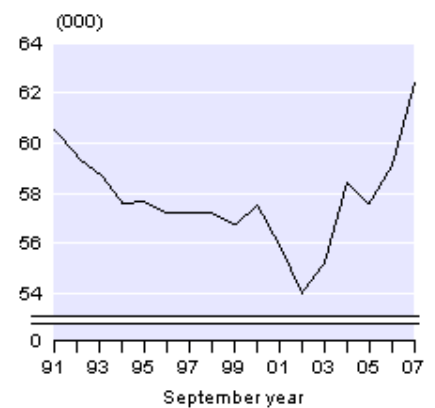
## Births and Deaths: September 2007 quarter

### Highlights

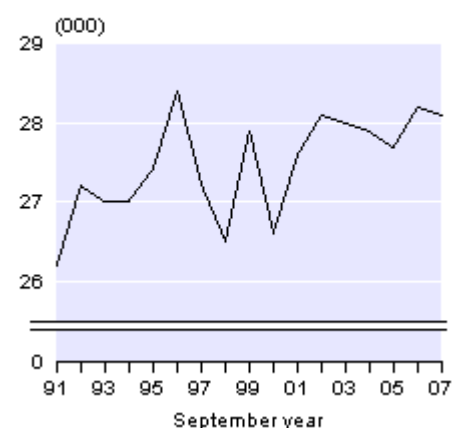
In the September 2007 year:

- There were 62,360 live births registered in New Zealand.
- New Zealand women averaged 2.1 births each.
- Nearly one-quarter of babies had more than one ethnic group.
- The median age of women giving birth was 30 years.
- The median age of women giving birth to their first child was 28 years.
- The infant mortality rate was 4.9 deaths per 1,000 live births.
- There were 28,150 deaths registered.
- A newborn girl can expect to live 81.9 years and a newborn boy 77.9 years, according to abridged life tables for 2004–2006.
- Births exceeded deaths by 34,220.

Live Births  
1991–2007



Deaths  
1991–2007



Geoff Bascand  
Government Statistician

19 November 2007  
ISSN 1178-0436

There is a companion Media Release published – [Births and Deaths: September 2007 quarter](#).

# Commentary

## Live births

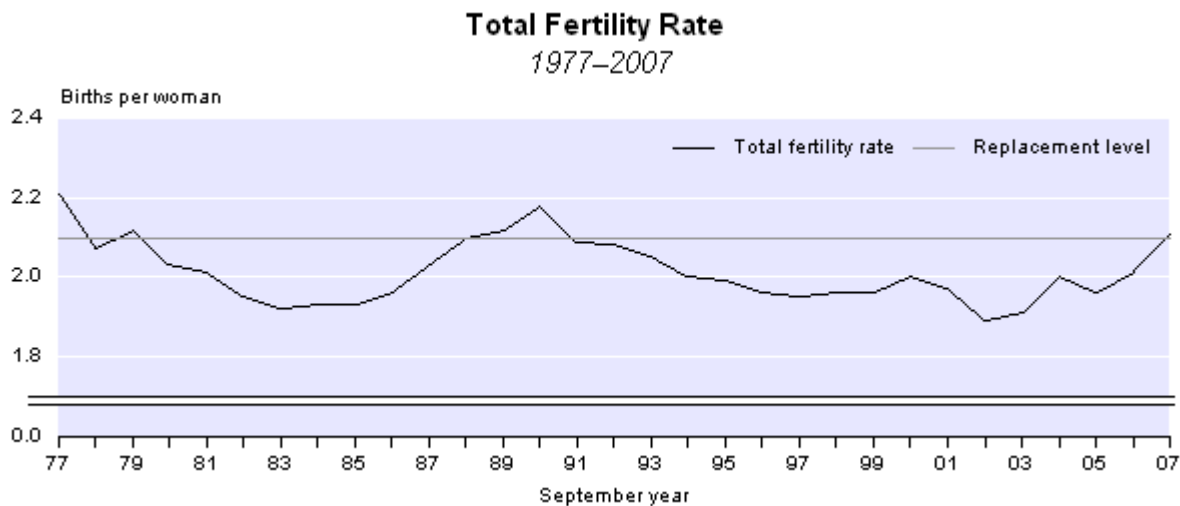
There were 62,360 live births registered in New Zealand in the September 2007 year, up 3,250 (5.5 percent) from the September 2006 year. The latest figure is 8.6 percent higher than the annual average of 57,400 births per year over the last decade, when the number of births varied from a low of 54,010 in 2002 to this year's high of 62,360. This is the highest number of births since 1972 when 64,090 live births were registered. The highest number of births registered in any September year was 65,660 in 1962.

During the September 2007 year, the births of 32,080 boys and 30,280 girls were registered to mothers resident in New Zealand. There are normally more boys born than girls, with an average of 105 boys born for every 100 girls.

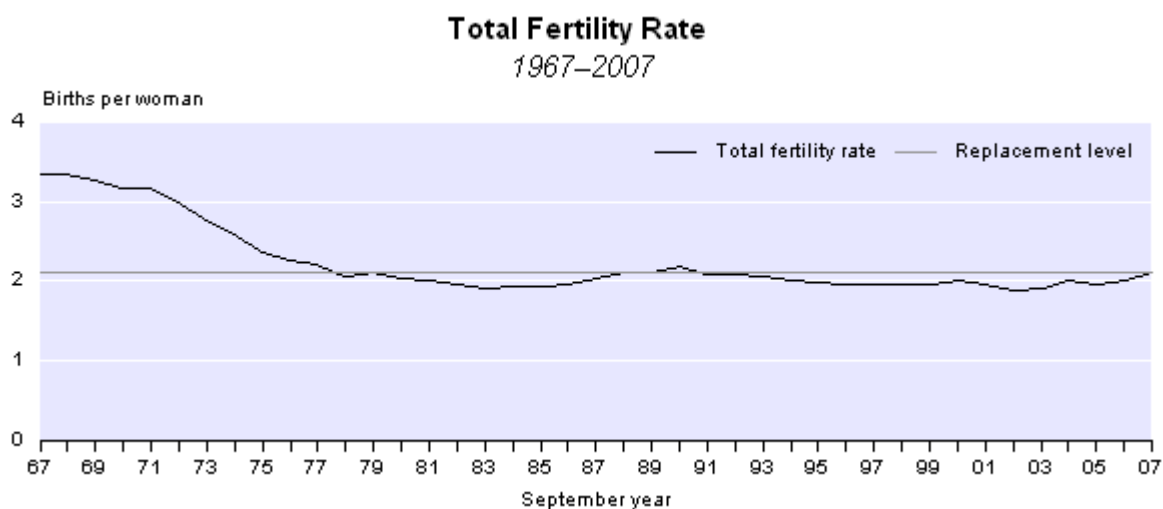
Live births registered in the September 2007 quarter totalled 15,720, an increase of 750 (5.0 percent) compared with the September 2006 quarter. More births were registered in July 2007 (up 14.1 percent) and August 2007 (up 2.9 percent) when compared with the same month in the previous year, but fewer in September 2007 (down 1.3 percent).

## Annual fertility rates

Annual fertility rates for 2007 indicate that New Zealand women averaged 2.11 births per woman, up from 2.01 in 2006. The level required by a population to replace itself in the long term without migration is 2.1 births per woman. This is the first September year since 1992 that New Zealand's total fertility rate has reached this level. However, fertility rates of close to or higher than 2.1 births per woman need to be sustained over many years before 'replacement level' fertility can be claimed. Apart from a short period around 1990, fertility in New Zealand has been slightly below the replacement level since 1980.



Despite the recent upturn, New Zealand's total fertility rate has been relatively stable over the last two decades, averaging 2.01 births per woman. During this period, the total fertility rate varied from 2.18 births per woman in 1990 to 1.89 in 2002. In contrast, during 1948–1967 women averaged 3.82 births, with the fertility rate peaking at 4.31 births per woman in 1961.

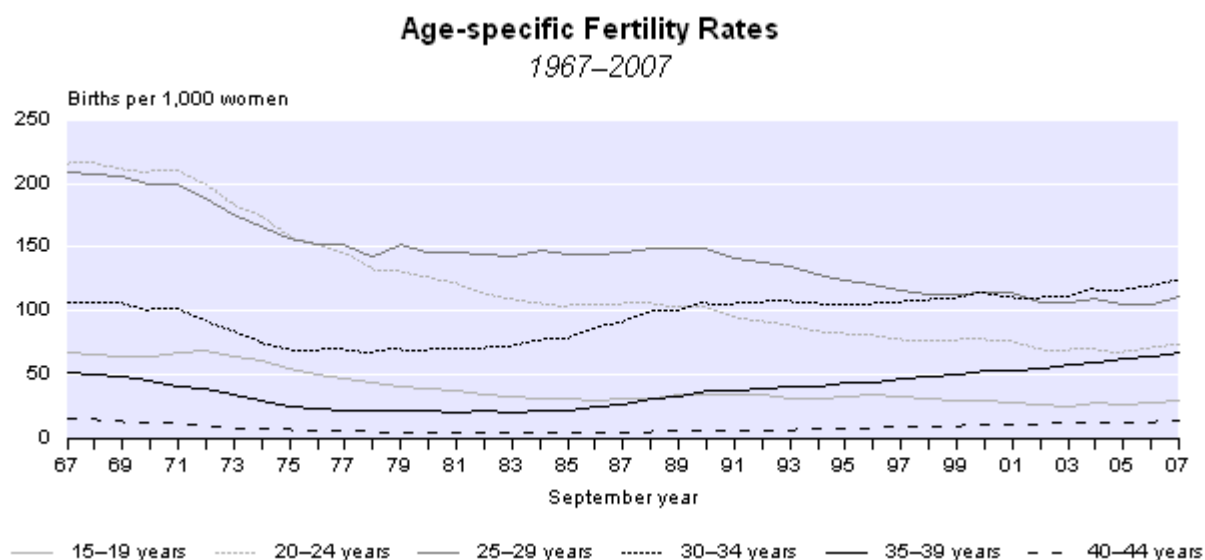


A number of other low-fertility countries have experienced slight recoveries in their fertility rates in recent years, including Australia (up from 1.7 births per woman in 2001 to 1.8 in 2006), England and Wales (up from 1.6 in 2001 to 1.8 in 2005), Denmark (up from 1.7 in 2002 to 1.8 in 2005) and Sweden (up from 1.5 in 1999 to 1.9 in 2006). France's total fertility rate hovered around 1.9 births per woman between 2000–2005, but rose to 2.0 in 2006.

## Fertility rates and mother's age

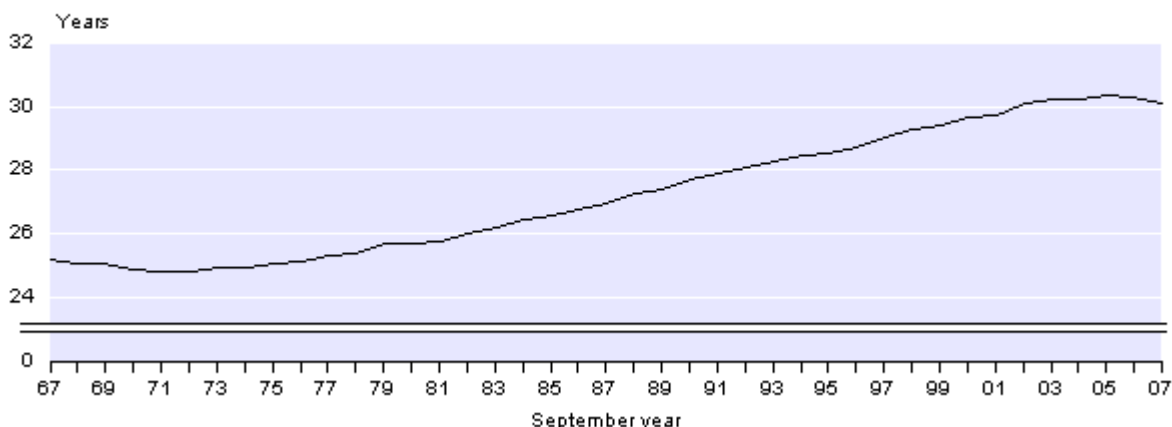
In 2007, there were more births to women in all age groups compared with 2006. One-third (1,150) of the increase occurred in the 25–29 year age group, while women aged 35–39 years contributed an extra 790 births (one-quarter of the increase).

Fertility rates for all age groups have also increased since 2006. In the September 2007 year, women aged 30–34 years had the highest fertility rate (124 births per 1,000 women aged 30–34 years), followed by those aged 25–29 years (111 per 1,000). In 2007, 53 percent of all newborn babies had a mother aged 25–34 years and 89 percent of newborns had a mother aged 20–39 years.



Between the 1997 and 2007 September years, fertility rates for women aged under 30 years dropped. The largest decrease occurred among women aged 15–19 years (down 8 percent), followed by those aged 20–24 years (6 percent) and 25–29 years (4 percent). In contrast, fertility rates for women aged 30 years and over have increased, with those aged 30–34 and 35–39 years increasing by 16 percent and 46 percent, respectively.

**Median Age of Mother**  
1967–2007



On average, New Zealand women now have children about five years later than their counterparts in the mid 1970s. The median age (half are younger and half older than this age) of New Zealand women giving birth is now 30.1 years, compared with 25.3 years in 1977. Although there has been a significant increase in the median age since the 1970s, it has been relatively stable (just above 30 years) since 2002. The median age of women giving birth to their first child (based on children in the current relationship only) was 28 years in the year ended September 2007.

## Births by ethnicity

The 2006 Census showed that 10 percent of the census usually resident population identified with more than one ethnic group. Birth registrations for the September 2007 year show that 13 percent of mothers and 25 percent of babies identified with more than one ethnic group. This suggests that younger generations are becoming increasingly multi-ethnic. Two-thirds of Māori babies and one-half of Pacific babies belonged to multiple ethnic groups, compared with roughly one-third of babies within the European, Asian and Other (including New Zealander) ethnic groups.

In the September 2007 year, the European ethnic group gained 43,630 babies, Māori 18,170, Pacific peoples 9,500, Asian 6,740, MELAA (Middle Eastern, Latin American and African) 1,010 and Other (including New Zealanders) 740. Within the Other ethnic group almost all (97 percent) of the babies had New Zealander as one of their ethnicities.

The total fertility rate for Māori women in the September 2007 year was 2.87 births per woman, up from 2.72 in 2006 and well above the rate for the total population (2.11 births per woman). In the September 2007 year, there were 14,320 live births registered to Māori women. Māori women giving birth tend to be younger, with a median age of 25.8 years in the September 2007 year.

## Regional births

The Auckland region had the highest number of births in the September 2007 year (22,430), accounting for 36 percent of all live births registered in New Zealand. This was followed by Canterbury (7,330), Wellington (6,720) and Waikato (6,050). Together, these four regions accounted for about two-thirds of all live births registered in the September 2007 year. This is consistent with their share of New Zealand's population.

During the September 2007 year, five regions had higher percentage increases in birth numbers than the average for New Zealand (5.5 percent). These were Nelson (up 20.1 percent), Taranaki (up 11.4 percent), Southland (up 9.5 percent), Waikato (up 8.5 percent) and Canterbury (up 7.6 percent). Auckland had the highest numerical increase (up 1,040), while Tasman, Marlborough and the West Coast had small decreases.

## Deaths and longevity

Deaths registered during the September 2007 year totalled 28,150, compared with 28,180 in the September 2006 year. There were 14,000 male deaths and 14,150 female deaths.

Deaths are becoming increasingly concentrated in the older age groups. The median age at death in the September 2007 year was 76.3 years for males and 82.3 years for females, compared with 73.5 for males and 79.9 for females a decade earlier. Only 5.5 percent of the deceased were aged under 40 years in the September 2007 year, while 15.4 percent of deaths occurred at ages 90 years and above. Of the 210 people who died at age 100 years and over, 83 percent were female. Increasing life expectancy has resulted in an increasing number of people living to 100 years and beyond. This has, in turn, lead to a doubling in the number of deaths at 100 years and over in the last decade.

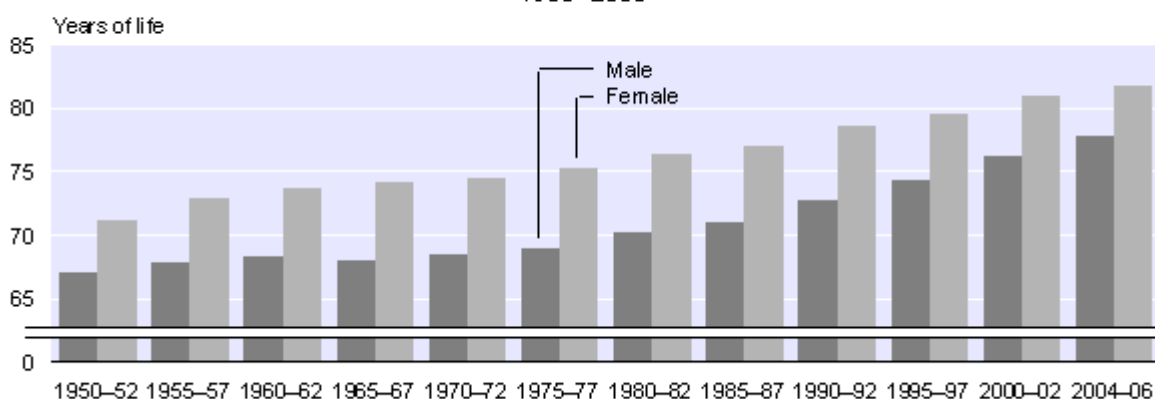
The crude death rate (deaths per 1,000 mean estimated resident population) was 6.7 in the September 2007 year, down from 7.2 in 1997. Because the death rate is influenced by the age structure of the population, it does not provide a true measure of the trends in mortality. Life tables are used to give a more accurate description of the mortality experience.

According to the New Zealand abridged period life table for 2004–2006, a newborn girl can be expected to live, on average, 81.9 years, and a newborn boy 77.9 years. These levels represent longevity gains since 2003–2005 of 0.2 years for females and 0.4 years for males. While female life expectancy is still higher than male life expectancy, their longevity gap has narrowed from 6.4 years in 1975–1977 to 4.1 years in 2004–2006. Since 1975–1977, life expectancy at birth has increased by 6.5 years for females and 8.9 years for males.

### Life Expectancy at Birth

By sex

1950–2006



**Note:** Abridged period life table 2004–2006.

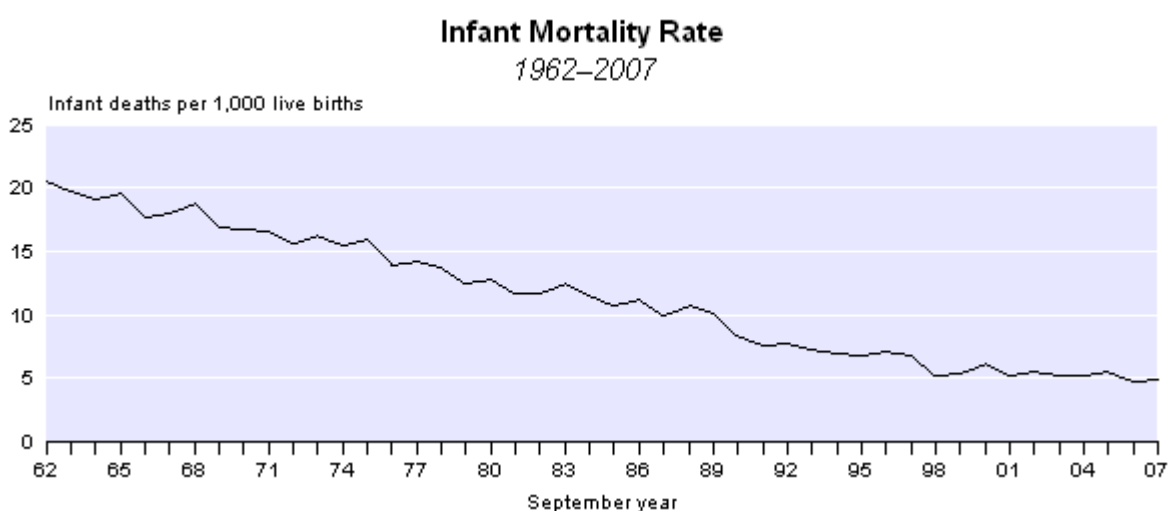
Abridged period life tables are produced annually for the total population only. Complete life tables are produced for Māori, non-Māori and total populations every five years. The latest complete period life tables available cover 2000–2002. Māori life expectancy is significantly lower than life expectancy for the total population. Life expectancy at birth for females of Māori ethnicity in 2000–2002 was 73.2 years, while for Māori males it was 69.0 years. The difference of about 7.6 years between Māori and the total population in 2000–2002 is slightly less than the estimated difference of 8.1 years in 1995–1997.

Life tables for other ethnicities, such as the broad Pacific and Asian ethnic groups, have not been produced because of the small number of death registrations and the uncertainty associated with ethnic identification and measurement.

## Infant mortality

During the September 2007 year, the number of infant deaths (under one year of age) registered in New Zealand totalled 300. The infant mortality rate (infant deaths per 1,000 live births) has dropped over the last 30 years. In the September 2007 year, the infant mortality rate was 4.9 per 1,000, down from 6.9 in the September 1997 year and 14.2 in 1977. The Māori infant mortality rate was 6.1 per 1,000 in the September 2007 year, down from 11.0 in 1997.

Neonatal deaths (under four weeks of age) made up 51 percent of infant deaths in the September 2007 year. The neonatal mortality rate (neonatal deaths per 1,000 live births) was 2.5 in 2007, down from 3.7 in the September 1997 year. The post-neonatal mortality rate (infant deaths over 28 days of age per 1,000 live births) has also dropped over the last decade, from 3.2 to 2.4 per 1,000.



Australia has also experienced a drop in infant mortality rates in the last decade. In 1995, New Zealand's infant mortality rate was 6.8 per 1,000 live births compared with 5.7 per 1,000 in Australia. By 2005, New Zealand's infant mortality rate had dropped to 5.6 per 1,000 and Australia's rate had dropped to 5.0 per 1,000. (Infant mortality rates for Australia beyond 2005 are not yet available.)

Scotland (5.7 per 1,000 live births), and England and Wales (5.0) had similar infant mortality rates to New Zealand's in 2005. However, a number of other low fertility rate countries had lower infant mortality rates. For example, Sweden (2.4), Norway (2.9), Finland (3.0), France (3.6) and the Netherlands (4.4).

## Regional deaths

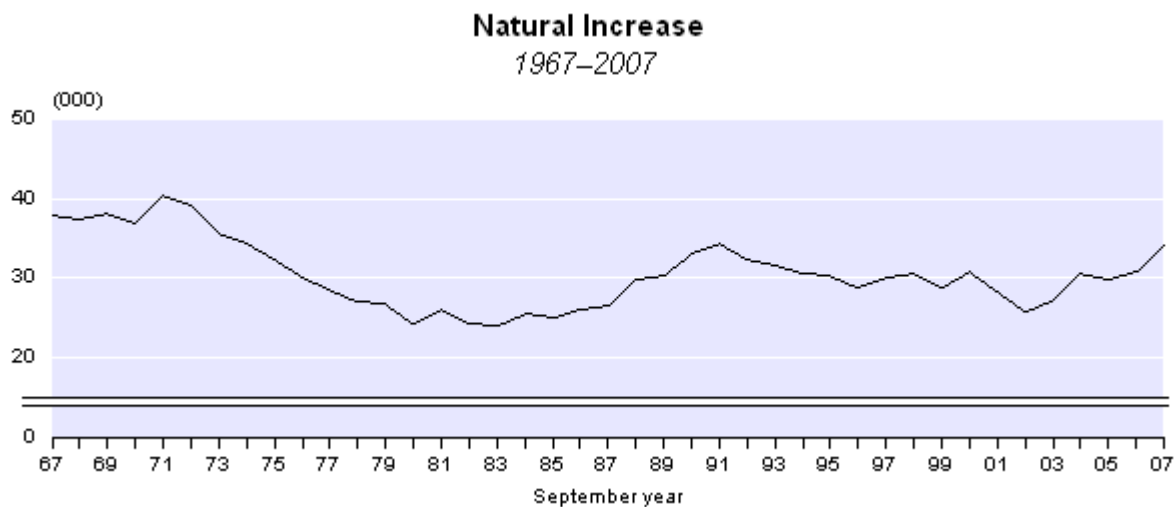
There were 6,990 deaths of residents in the Auckland region during the September 2007 year. Although the Auckland region is home to approximately one-third of New Zealand's population, it only accounted for one-quarter of New Zealand's deaths. This is due to the region's relatively young age structure. Only 10 percent of the Auckland region's population is aged 65 years and over, compared with 12 percent for the national population.

Based on the 2000–2002 abridged life tables for regions, life expectancy at birth across the regions ranged from 72.6 to 77.5 years for males and 78.9 to 82.2 years for females. The reasons for subnational differences in longevity and mortality are difficult to identify precisely and are probably due to a combination of interrelated factors, including the proportion of the population who are Māori, the proportion of the population who smoke (or have smoked), the proximity to health and hospital services, the degree of urbanisation and socio-economic factors.

More information about regional mortality can be found in Statistics New Zealand's report [\*New Zealand Life Tables \(2000–2002\)\*](#).

## Natural increase of population

Natural increase of population represents the excess of births over deaths. Births outnumbered deaths by 34,220 in the September 2007 year. This is the highest natural increase recorded since 1991, when births exceeded deaths by 34,280. However, the 2006-base national population projections show that natural increase is likely to decline over the next 50 years. Deaths are projected to outnumber births from 2055.



All regions in New Zealand had more births than deaths in the September 2007 year. Auckland's natural increase (15,440) made up 45 percent of the national natural increase. Auckland's large share of New Zealand's natural increase is due to the small number of deaths relative to the number of births and the size of its population.

## **Final figures and revised demographic rates**

The vital statistics and infant mortality rates for the September 2007 year quoted above, and contained in the appended tables, are final. Fertility rates and crude birth rates for 2001–2006 have been revised using new 2006-based population estimates. The revised 2006-based rates are not comparable with the 2001-based rates published in previous *Hot Off The Press* releases. Fertility rates and crude death rates for the September 2007 quarter and year are provisional. For further details see the Technical notes of this release.

For technical information contact:  
Anne Howard  
Christchurch 03 964 8700  
Email: [demography@stats.govt.nz](mailto:demography@stats.govt.nz)

## **Technical notes**

### **Births**

Birth data for the March, June, September and December quarters of 1998 are based on the number of notifications received by the Department of Internal Affairs. All other birth data are based on live births registered in New Zealand to mothers resident in New Zealand by date of registration. Birth data exclude late registrations under section 16 of the Births, Deaths, and Marriages Registration Act 1995. Section 16 births are those that were not registered in the ordinary way at the time the birth occurred.

### **Deaths**

Death data are based on deaths registered in New Zealand of New Zealand residents by date of registration.

### **Replacement level fertility**

Replacement level fertility is the average number of children a woman needs to have to produce one daughter who survives to childbearing age. Replacement level fertility is also described as the total fertility rate required for the population to replace itself in the long term, without migration.

The internationally accepted replacement level is 2.1 births per woman. Replacement level fertility allows for child mortality (children who die before reaching reproductive age) and the birth of more boys than girls. On average, throughout the world 105 boys are born for every 100 girls. The actual replacement level will vary slightly from country to country, depending on child mortality rates. In countries with high child mortality, the total fertility rate will need to be higher than 2.1 births per woman to achieve replacement level.

### **Total fertility rate**

The total fertility rate is the average number of live births that a woman would have during her life if she experienced the age-specific fertility rates of a given period (usually a year). It excludes the effect of mortality.

### **Children of this relationship**

The birth registration forms ask whether there are any other children of this relationship. However, it is possible that children from previous relationships are included. Unfortunately, this question does not produce an accurate measure of all live births to a woman (needed for accurate measures of birth parity). For privacy reasons it is deemed unacceptable to ask women about children outside their current relationship.

## Life tables

A life table is a standard demographic device that provides a detailed description of the mortality experience prevailing in a population during a given period. It comprises an array of measures, including probabilities of death, probabilities of survival and life expectancies at various ages. The 2000–2002 period life tables relating to New Zealand Māori, non-Māori and total populations were released by Statistics New Zealand on 30 March 2004. These are available on the Statistics NZ website ([www.stats.govt.nz](http://www.stats.govt.nz)). More details on life table methodology and results are included in *New Zealand Life Tables (2000–2002)*.

## Resident population concept

Unless otherwise stated, this release refers to vital events (births and deaths) registered in New Zealand by date of registration. It excludes births to women who normally reside overseas, and deaths of people who normally reside overseas. Demographic rates are calculated using the mean estimated resident population.

## Revised demographic rates

After each Census of Population and Dwellings, Statistics NZ routinely revises its intercensal population estimates based on the latest census usually resident population count. Statistics NZ has revised annual and quarterly population estimates for the 2001–2006 intercensal period. The mean estimated resident population is used as the denominator for calculating various demographic rates, such as total fertility rates, crude birth rates, crude death rates and age-specific birth and death rates.

All quarterly and annual demographic rates for the 2001–2006 period have been revised based on 2006-base population estimates. Revised rates are now available on the Statistics NZ website and on INFOS.

## Rounding

Birth and death figures contained in the tables attached to this release are unrounded. All other figures have been rounded. This may result in a total differing slightly from the sum of its components. Derived figures (for example percentage annual increase) have been calculated using unrounded data.

## More information

For more information, follow the [link](#) from the Technical notes of this release on the Statistics NZ website.

## Copyright

Information obtained from Statistics NZ may be freely used, reproduced, or quoted unless otherwise specified. In all cases Statistics NZ must be acknowledged as the source.

## **Liability**

While care has been used in processing, analysing and extracting information, Statistics NZ gives no warranty that the information supplied is free from error. Statistics NZ shall not be liable for any loss suffered through the use, directly or indirectly, of any information, product or service.

## **Timing**

Timed statistical releases are delivered using postal and electronic services provided by third parties. Delivery of these releases may be delayed by circumstances outside the control of Statistics NZ. Statistics NZ accepts no responsibility for any such delays.

### **Next release ...**

*Births and Deaths: December 2007 quarter* will be released on 18 February 2008.

Statistics New Zealand: The first source of independent information for your key decisions.

## Tables

The following tables can be downloaded from the Statistics New Zealand website in Excel 97 format. If you do not have access to Excel 97 or higher, you may use the [Excel file viewer](#) to view, print and export the contents of the file.

### List of tables

1. Births, deaths and selected rates, 1991–2007
2. Live births by regional council, 1994–2007
3. Deaths by regional council, 1994–2007
4. Age-specific fertility rates, 1992–2007
5. Live births by mother's age, 1992–2007
6. Deaths by age and sex, 2007

**Births and Deaths: September 2007 quarter**

Table 1

**Births, Deaths and Selected Rates  
1991–2007**

INFOS Series	Live births <sup>(1)</sup>	Crude birth rate <sup>(2)</sup>	Total fertility rate <sup>(3)</sup>	Deaths	Crude death rate <sup>(2)</sup>	Infant mortality rate <sup>(4)</sup>	Natural increase <sup>(5)</sup>
	VTBQ.SKTLZ VTBA.SKTLZ	DFMQ.SKHL DFMA.SKGL	DFMQ.SGHK DFMA.SGGK	VTDQ.S1T3 VTDA.S1T3	DMMQ.SPHL DMMA.SPGL	DMMQ.SRHL DMMA.SRGL	VTBQ.SJT VTBA.SJT
<b>Quarter ended September</b>							
1991	15,525	17.74	2.17	7,483	8.55	9.15	8,042
1992	14,612	16.53	2.04	7,681	8.69	7.60	6,931
1993	14,969	16.74	2.09	7,760	8.68	7.75	7,209
1994	14,554	16.06	2.02	8,022	8.85	8.18	6,532
1995	14,331	15.57	1.98	8,058	8.76	7.12	6,273
1996	14,615	15.64	2.00	8,441	9.03	8.48	6,174
1997	14,620	15.45	2.00	7,980	8.43	7.52	6,640
1998	14,631	15.33	2.01	7,527	7.89	5.47	7,104
1999	14,564	15.18	2.02	8,262	8.61	5.63	6,302
2000	14,017	14.52	1.97	7,186	7.44	6.63	6,831
2001	13,656	14.05 R	1.93 R	7,914	8.14 R	5.64	5,742
2002	13,695	13.84 R	1.91 R	7,962	8.05 R	5.26	5,733
2003	13,967	13.84 R	1.92 R	8,186	8.11 R	5.23	5,781
2004	14,477	14.14 R	1.98 R	7,978	7.79 R	6.15	6,499
2005	14,106	13.63 R	1.92 R	7,267	7.02 R	6.52	6,839
2006	14,971	14.29	2.03	8,151	7.78	6.48	6,820
2007	15,721	14.85 P	2.14 P	7,835	7.40 P	5.85	7,886
<b>Year ended September</b>							
1991	60,464	..	..	26,183	..	7.59	34,281
1992	59,514	16.89	2.08	27,185	7.71	7.81	32,329
1993	58,774	16.50	2.05	27,040	7.59	7.23	31,734
1994	57,572	15.95	2.00	27,012	7.48	6.98	30,560
1995	57,744	15.77	1.99	27,415	7.49	6.77	30,329
1996	57,209	15.38	1.96	28,448	7.65	7.08	28,761
1997	57,191	15.16	1.95	27,226	7.22	6.87	29,965
1998	57,203	15.02	1.96	26,531	6.97	5.31	30,672
1999	56,769	14.81	1.96	27,937	7.29	5.43	28,832
2000	57,486	14.91	2.00	26,649	6.91	6.14	30,837
2001	55,860	14.40 R	1.97 R	27,596	7.12 R	5.23	28,264
2002	54,012	13.73 R	1.89 R	28,110	7.15 R	5.61	25,902
2003	55,214	13.77 R	1.91 R	27,988	6.98 R	5.18	27,226
2004	58,380	14.33 R	2.00 R	27,926	6.85 R	5.28	30,454
2005	57,615	13.97 R	1.96 R	27,726	6.72 R	5.57	29,889
2006	59,115	14.17	2.01	28,182	6.75	4.82	30,933
2007	62,362	14.78 P	2.11 P	28,146	6.67 P	4.89	34,216

(1) Excludes late registrations under section 16 of the Births, Deaths, and Marriages Registration Act 1995. (Births which were not registered in the ordinary way at the time the birth occurred.)

(2) Live births or deaths per 1,000 mean estimated resident population.

(3) The average number of live births that a woman would have during her life if she experienced the age-specific fertility rates of a given period (usually a year). It excludes the effect of mortality.

(4) Deaths of children under one year of age per 1,000 live births.

(5) Excess of live births over deaths.

**Note:**

(a) Death data are based on deaths registered in New Zealand of New Zealand residents by date of registration.

(b) Birth data for the March, June, September and December 1998 quarters are based on the number of notifications received by the Department of Internal Affairs. All other birth data are based on live births registered in New Zealand to mothers resident in New Zealand by date of registration.

(c) For analytical purposes, registration-based data for 1998 is available on INFOS.

**Symbols:**

P provisional

R revised

.. figures not available

**Births and Deaths: September 2007 quarter**

Table 2

**Live Births by Regional Council  
1994–2007**

Regional council	September year													
	1994	1995	1996	1997	1998	1999	2000	2001	2002	2003	2004	2005	2006	2007
Northland region	2,316	2,380	2,281	2,217	2,216	2,135	2,162	2,002	1,941	1,963	2,112	2,074	2,193	2,296
Auckland region	17,945	18,437	18,836	18,803	18,705	18,958	19,837	19,451	19,130	19,825	21,022	20,629	21,385	22,430
Waikato region	5,904	5,847	5,670	5,797	5,615	5,667	5,615	5,409	5,327	5,302	5,621	5,690	5,581	6,054
Bay of Plenty region	3,706	3,650	3,743	3,909	3,823	3,740	3,834	3,605	3,519	3,570	3,858	3,756	3,810	3,997
Gisborne region	939	937	869	811	785	786	781	786	728	717	757	757	737	764
Hawke's Bay region	2,426	2,365	2,405	2,355	2,175	2,136	2,200	2,128	2,104	1,992	2,172	2,159	2,160	2,266
Taranaki region	1,710	1,633	1,565	1,515	1,496	1,487	1,486	1,340	1,348	1,315	1,369	1,405	1,417	1,579
Manawatu-Wanganui region	3,684	3,751	3,556	3,534	3,342	3,151	3,362	3,107	2,913	2,924	2,915	3,045	3,178	3,221
Wellington region	6,708	6,596	6,378	6,336	6,483	6,436	6,595	6,472	5,995	6,327	6,397	6,217	6,433	6,717
Tasman region	521	510	475	470	496	499	516	514	502	520	582	521	546	536
Nelson region	559	506	569	504	521	512	542	575	503	531	572	528	508	610
Marlborough region	477	527	506	524	451	455	485	453	414	446	477	461	493	482
West Coast region	493	473	489	444	410	408	378	389	335	332	379	351	392	376
Canterbury region	6,241	6,328	6,165	6,340	5,950	6,169	6,172	6,240	5,995	6,080	6,632	6,522	6,812	7,332
Otago region	2,457	2,371	2,304	2,301	2,143	2,116	2,167	2,078	2,030	2,041	2,161	2,221	2,139	2,254
Southland region	1,468	1,415	1,382	1,315	1,312	1,227	1,256	1,225	1,166	1,257	1,249	1,244	1,202	1,316
Region not stated/ area outside region	18	18	16	16	230	286	98	86	62	72	105	35	129	132
<b>New Zealand</b>	<b>57,572</b>	<b>57,744</b>	<b>57,209</b>	<b>57,191</b>	<b>56,153</b>	<b>56,168</b>	<b>57,486</b>	<b>55,860</b>	<b>54,012</b>	<b>55,214</b>	<b>58,380</b>	<b>57,615</b>	<b>59,115</b>	<b>62,362</b>

**Note:**

- (a) Birth data are based on live births registered in New Zealand to mothers resident in New Zealand by date of registration.
- (b) Registered births for 1998 are lower than expected because of a small change to the rate at which births were registered during 1998.

Table 3

**Deaths by Regional Council**  
1994–2007

Regional council	September year													
	1994	1995	1996	1997	1998	1999	2000	2001	2002	2003	2004	2005	2006	2007
Northland region	1,116	1,109	1,156	1,118	1,101	1,184	1,124	1,205	1,249	1,261	1,199	1,213	1,149	1,181
Auckland region	7,033	7,140	7,322	7,246	6,887	7,136	6,844	6,989	7,147	7,176	7,141	7,016	7,150	6,988
Waikato region	2,426	2,359	2,516	2,444	2,462	2,641	2,496	2,578	2,557	2,524	2,580	2,548	2,767	2,725
Bay of Plenty region	1,695	1,783	1,943	1,852	1,767	1,971	1,865	2,020	1,963	2,014	2,014	1,980	2,137	2,179
Gisborne region	396	421	441	399	370	415	400	382	384	413	376	360	416	395
Hawke's Bay region	1,273	1,231	1,216	1,285	1,190	1,270	1,189	1,213	1,260	1,339	1,202	1,295	1,273	1,266
Taranaki region	935	883	901	787	763	861	876	914	870	924	910	940	851	932
Manawatu-Wanganui region	1,949	1,924	2,034	1,829	1,830	1,981	1,859	1,990	1,962	1,849	1,928	1,946	1,931	1,870
Wellington region	2,822	2,954	3,004	2,940	2,869	2,899	2,811	2,842	2,936	2,922	2,903	2,820	2,819	2,831
Tasman region	244	323	301	286	268	260	298	302	287	294	295	327	335	330
Nelson region	319	370	353	338	348	332	337	350	382	374	376	353	362	378
Marlborough region	270	347	329	335	303	330	342	334	384	342	359	391	358	347
West Coast region	288	283	313	300	310	296	222	281	268	278	264	230	253	242
Canterbury region	3,895	3,925	4,109	3,716	3,753	3,825	3,654	3,838	3,976	3,834	4,037	3,966	4,005	4,048
Otago region	1,538	1,511	1,607	1,583	1,488	1,586	1,493	1,482	1,615	1,574	1,471	1,453	1,490	1,524
Southland region	807	842	883	757	748	794	767	807	812	798	796	759	752	780
Region not stated/ area outside region	6	10	20	11	74	156	72	69	58	72	75	129	134	130
<b>New Zealand</b>	<b>27,012</b>	<b>27,415</b>	<b>28,448</b>	<b>27,226</b>	<b>26,531</b>	<b>27,937</b>	<b>26,649</b>	<b>27,596</b>	<b>28,110</b>	<b>27,988</b>	<b>27,926</b>	<b>27,726</b>	<b>28,182</b>	<b>28,146</b>

**Note:** Deaths are based on deaths registered in New Zealand of New Zealand residents by date of registration.

Table 4

**Age-specific Fertility Rates<sup>(1)</sup>**  
1992–2007

September year	Age of mother (years)								Median age of mother (years)
	Under 15 <sup>(2)</sup>	15–19	20–24	25–29	30–34	35–39	40–44	45+ <sup>(3)</sup>	
1992	0.3	33.5	92.4	137.9	106.7	38.8	6.0	0.3	28.1
1993	0.2	31.5	89.1	134.4	107.6	40.2	6.4	0.3	28.3
1994	0.2	31.8	84.0	128.8	106.7	40.6	6.9	0.4	28.5
1995	0.3	32.9	83.6	124.7	105.5	44.0	7.0	0.4	28.6
1996	0.2	33.6	81.3	120.2	105.5	43.2	7.7	0.4	28.7
1997	0.3	32.7	78.9	115.7	106.8	46.6	8.7	0.4	29.0
1998	0.3	30.0	76.5	112.2	107.8	48.4	8.7	0.4	29.3
1999	0.3	28.9	76.9	113.4	109.7	49.4	9.1	0.4	29.4
2000	0.2	28.9	78.4	114.1	115.0	53.4	10.0	0.4	29.7
2001 R	0.2	27.4	76.7	113.8	111.4	52.8	10.5	0.5	29.8
2002 R	0.2	25.6	70.3	106.2	110.1	54.4	11.0	0.5	30.1
2003 R	0.2	25.3	68.3	106.4	111.2	57.5	11.7	0.6	30.2
2004 R	0.2	27.5	71.2	109.6	117.6	60.2	12.0	0.6	30.2
2005 R	0.3	26.8	68.0	105.2	116.3	61.9	12.3	0.6	30.4
2006	0.2	28.3	70.2	104.8	119.8	63.9	12.2	0.7	30.3
2007 P	0.3	30.2	74.3	111.3	123.9	68.1	13.2	0.7	30.1

(1) Per 1,000 mean estimated female population in each age group.

(2) Per 1,000 mean estimated female population aged 10–14 years.

(3) Per 1,000 mean estimated female population aged 45–49 years.

**Note:** Rates for 1998 and 1999 September years are lower than expected because of a small change to the rate at which births were registered during 1998.

**Symbols:**

P provisional

R revised

Table 5

**Live Births by Mother's Age**  
1992–2007

September year	Age of Mother (years)							All ages	
	Under 15	15–19	20–24	25–29	30–34	35–39	40–44		45+
1992	34	4,714	13,526	19,689	15,686	5,095	737	33	59,514
1993	27	4,292	13,101	18,938	16,185	5,407	793	31	58,774
1994	30	4,244	12,312	18,126	16,315	5,642	860	43	57,572
1995	42	4,344	12,093	17,750	16,251	6,314	901	49	57,744
1996	28	4,444	11,488	17,452	16,297	6,434	1,018	48	57,209
1997	42	4,333	10,867	17,051	16,477	7,185	1,188	48	57,191
1998	34	3,989	10,218	16,455	16,501	7,684	1,220	52	56,153
1999	35	3,852	10,000	16,312	16,673	7,932	1,309	55	56,168
2000	30	3,879	10,018	15,995	17,459	8,593	1,466	46	57,486
2001	26	3,722	9,797	15,318	16,954	8,389	1,582	72	55,860
2002	27	3,574	9,214	13,919	16,900	8,601	1,715	62	54,012
2003	34	3,646	9,325	13,818	17,296	9,112	1,895	88	55,214
2004	31	4,055	10,018	14,283	18,334	9,577	1,991	91	58,380
2005	41	4,018	9,732	13,808	17,936	9,927	2,060	93	57,615
2006	32	4,341	10,187	13,957	18,059	10,400	2,035	104	59,115
2007	49	4,719	10,857	15,104	18,142	11,192	2,190	109	62,362

**Note:** Birth registrations for 1998 and 1999 September years are lower than expected because of a small change to the rate at which births were registered during 1998.

Table 6

**Deaths by Age and Sex**  
2007

Age (years)	Number			Percent		
	Male	Female	People	Male	Female	People
0	163	142	305	0.6	0.5	1.1
1-4	39	37	76	0.1	0.1	0.3
5-9	23	14	37	0.1	0.0	0.1
10-14	28	24	52	0.1	0.1	0.2
15-19	130	61	191	0.5	0.2	0.7
20-24	141	58	199	0.5	0.2	0.7
25-29	113	42	155	0.4	0.1	0.6
30-34	137	86	223	0.5	0.3	0.8
35-39	184	127	311	0.7	0.5	1.1
40-44	256	203	459	0.9	0.7	1.6
45-49	393	263	656	1.4	0.9	2.3
50-54	508	348	856	1.8	1.2	3.0
55-59	696	494	1,190	2.5	1.8	4.2
60-64	910	643	1,553	3.2	2.3	5.5
65-69	1,210	884	2,094	4.3	3.1	7.4
70-74	1,579	1,102	2,681	5.6	3.9	9.5
75-79	2,122	1,603	3,725	7.5	5.7	13.2
80-84	2,334	2,254	4,588	8.3	8.0	16.3
85-89	1,790	2,670	4,460	6.4	9.5	15.8
90-94	958	2,121	3,079	3.4	7.5	10.9
95-99	249	799	1,048	0.9	2.8	3.7
100+	36	172	208	0.1	0.6	0.7
All ages	13,999	14,147	28,146	49.7	50.3	100.0
Median age at death	76.3	82.3	79.2	...	...	...

**Note:** Death data are based on deaths registered in New Zealand of New Zealand residents by date of registration.

**Symbol:**

... not applicable