

Embargoed until 10:45am – 18 February 2008

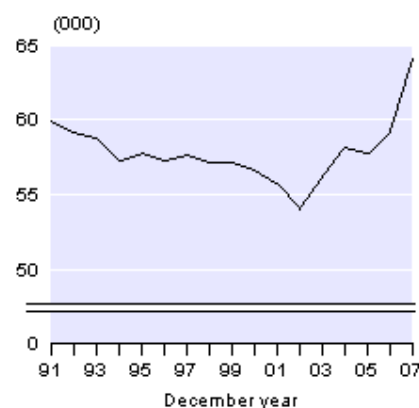
## Births and Deaths: December 2007 quarter

### Highlights

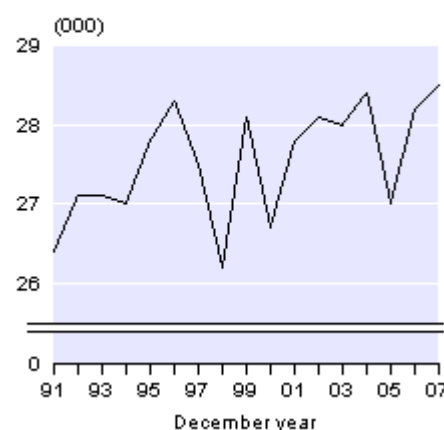
In the December 2007 year:

- There were 64,040 live births registered in New Zealand, the highest number since 1963.
- The birth rate was 2.2 births per woman, up from 2.0 in 2006.
- Women aged 30–34 years had the highest fertility rate (127 births per 1,000 women).
- Nearly one-quarter of babies identified with more than one ethnic group.
- The median age of women giving birth was 30 years.
- The median age of women giving birth to their first child was 28 years.
- The infant mortality rate was 4.9 deaths per 1,000 live births.
- There were 28,520 deaths registered.
- Births exceeded deaths by 35,520, the highest natural increase since 1972.

Live Births  
1991–2007



Deaths  
1991–2007



Geoff Bascand  
Government Statistician

18 February 2008  
ISSN 1178-0436

There is a companion Media Release published – [Births and Deaths: December 2007 quarter](#).

# Commentary

## Live births

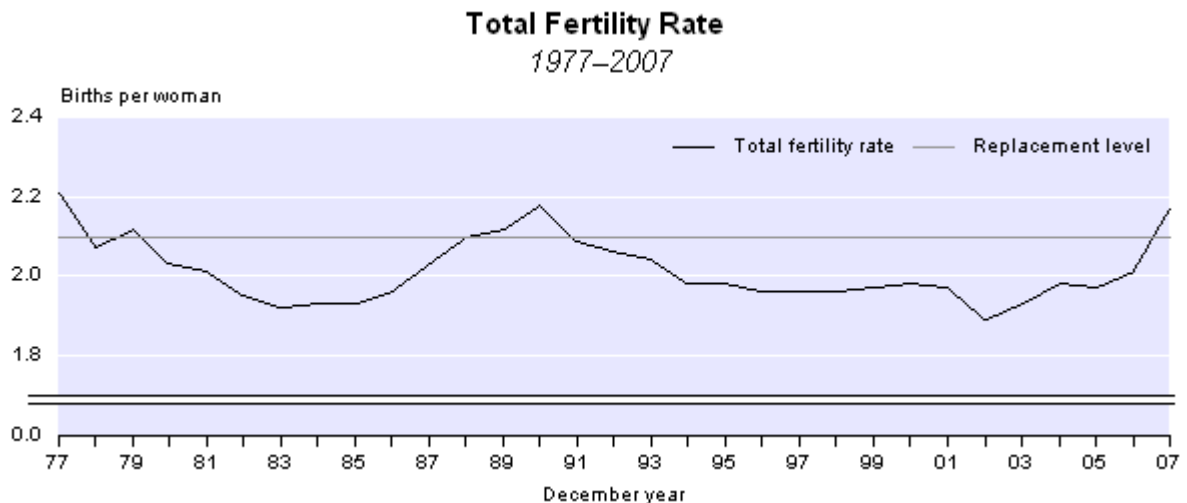
There were 64,040 live births registered in New Zealand in the December 2007 year, up 4,850 (8.2 percent) from the December 2006 year. The latest figure is 11.2 percent higher than the annual average of 57,580 births per year over the last decade, when the number of births varied from a low of 54,020 in 2002 to this year's high of 64,040. This is the highest number of births since 1963 when 64,530 live births were registered. The highest number of births registered in any December year was 65,390 in 1961. At that time New Zealand's population numbered just 2.4 million compared with 4.2 million in 2007.

During the December 2007 year, the births of 33,010 boys and 31,030 girls were registered to mothers resident in New Zealand. There are normally more boys born than girls, with an average of 105 boys born for every 100 girls.

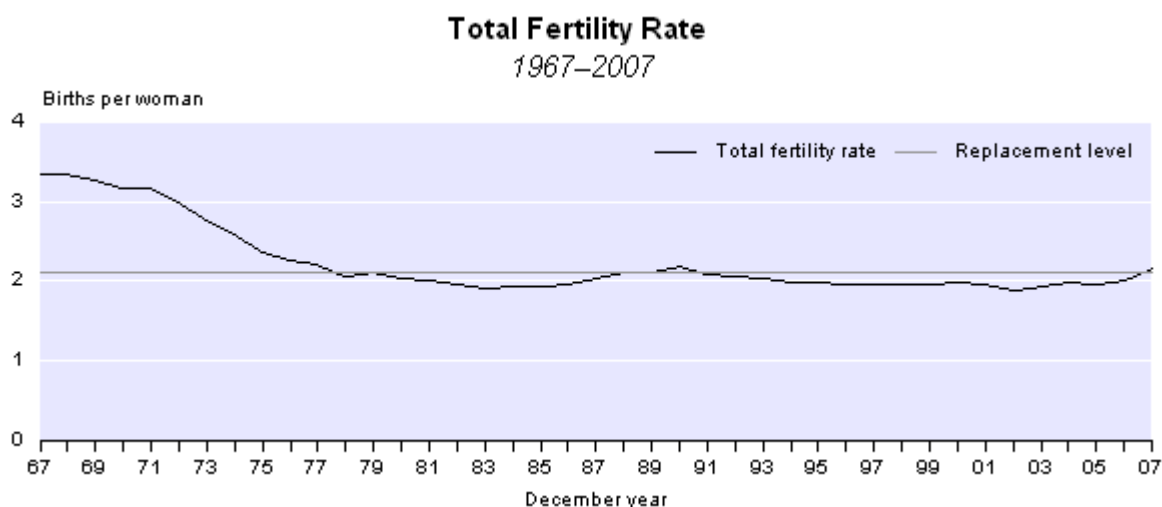
Live births registered in the December 2007 quarter totalled 16,030, an increase of 1,680 (11.7 percent) compared with the December 2006 quarter. Birth registrations increased in each quarter of 2007 when compared with the same quarter in the previous year – March (up 1,280 or 8.4 percent), June (up 1,140 or 7.8 percent) and September (up 750 or 5.0 percent).

## Annual fertility rates

Annual fertility rates for 2007 indicate that New Zealand women average 2.17 births per woman, up from 2.01 in 2006 and the highest rate since 1990 (2.18 births per woman). The level required by a population to replace itself in the long term without migration is 2.1 births per woman. However, fertility rates of close to or higher than 2.1 births per woman need to be sustained over many years before 'replacement level' fertility can be claimed. Since 1980 fertility in New Zealand has been slightly below the replacement level, with the exception of 2007 and for a short period around 1990.



Despite the recent upturn, New Zealand's total fertility rate has been relatively stable over the last two decades, averaging 2.02 births per woman. During this period, the total fertility rate varied from 2.18 births per woman in 1990 to 1.89 in 2002. In contrast, during 1948–1967 women averaged 3.82 births, with the fertility rate peaking at 4.31 births per woman in 1961.



A number of other low-fertility countries have experienced slight recoveries in their fertility rates in recent years, including Australia (up from 1.7 births per woman in 2001 to 1.8 in 2006), England and Wales (up from 1.6 in 2001 to 1.9 in 2006), Denmark (up from 1.7 in 2002 to 1.8 in 2005) and Sweden (up from 1.5 in 1999 to 1.9 in 2006). France's total fertility rate hovered around 1.9 births per woman between 2000 and 2005, but rose to 2.0 in 2006.

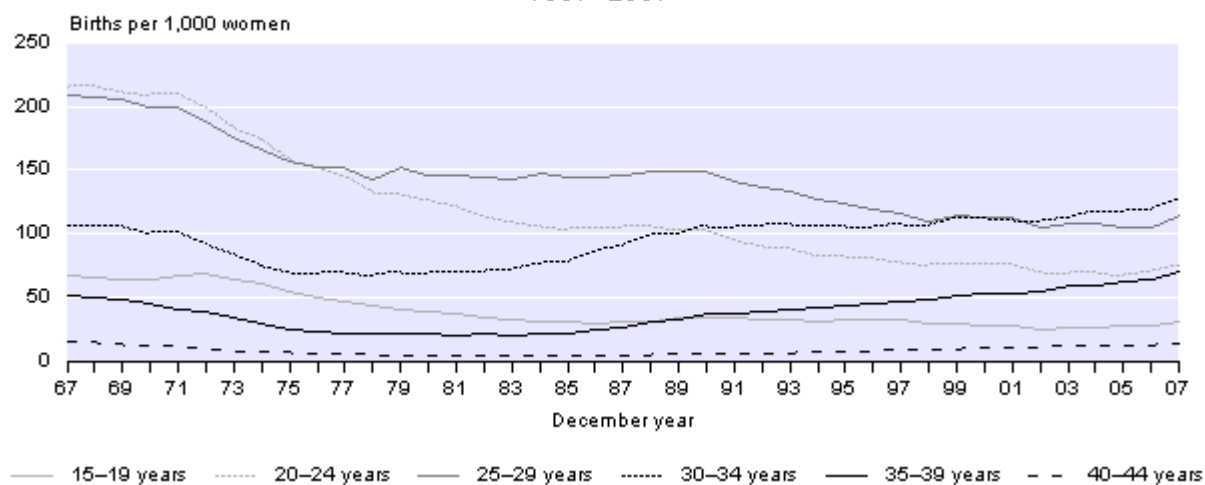
The current upturn in fertility is not expected to continue. Statistics New Zealand's mid-range population projections (series 5) assumes that the total fertility rate will average 2.09 births per woman in the five-year period 2007–2011, dropping to 2.00 in 2012–2016, then to 1.94 in 2017–2021, 1.91 in 2022–2026 and 1.90 thereafter.

## Fertility rates and mother's age

In 2007, there were more births to women in all age groups compared with 2006. Thirty percent (1,430) of the increase occurred in the 25–29 year age group, while women aged 35–39 years contributed an extra 1,200 births (one-quarter of the increase).

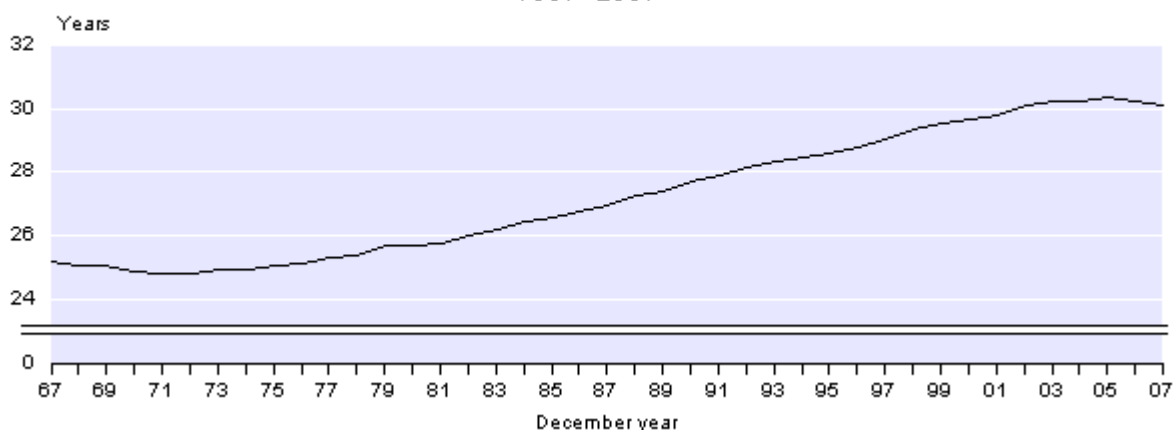
In the December 2007 year, women aged 30–34 years had the highest fertility rate (127 births per 1,000 women aged 30–34 years), followed by those aged 25–29 years (114 per 1,000) and 20–24 years (76 per 1,000). Forty years ago, in 1967, women aged 20–24 years had the highest fertility rate (215 per 1,000), followed by those aged 25–29 years (210 per 1,000) and 30–34 years (107 per 1,000).

### Age-specific Fertility Rates 1967–2007



Between the 1997 and 2007 December years, fertility rates for women aged 30 years and over increased, with fertility rates for those aged 30–34 and 35–39 years increasing by 18 percent and 49 percent, respectively. While fertility rates for women aged 40–44 years increased over the decade (up 57 percent), their fertility rate (14 per 1,000) is still lower than in 1967 (16 per 1,000). Fertility rates for women aged under 30 years decreased between 1997 and 2005 but increased in 2006 and 2007. In 2007, the fertility rate for women aged 15–19 years was 31 births per 1,000, less than half the 1967 rate (67 per 1,000).

### Median Age of Mother 1967–2007



On average, New Zealand women now have children about five years later than their counterparts in the mid-1960s. The median age (half are younger and half older than this age) of New Zealand women giving birth is now 30.1 years, compared with 25.2 years in 1967. Although there has been a significant increase in the median age since the 1970s, it has been relatively stable (just above 30 years) since 2002. The median age of women giving birth to their first child (based on children in the current relationship only) was 28 years in the year ended December 2007.

## **Births by ethnicity**

The 2006 Census showed that 10 percent of the census usually resident population identified with more than one ethnic group. Birth registrations for the December 2007 year show that 13 percent of mothers and 25 percent of babies identified with more than one ethnic group. This suggests that younger generations are becoming increasingly multicultural. Two-thirds of Māori babies and one-half of Pacific babies belonged to multiple ethnic groups, compared with roughly one-third of babies within the European, Asian and Other (including New Zealander) ethnic groups.

In the December 2007 year, the European ethnic group gained 44,680 babies, Māori 18,720, Pacific peoples 9,790, Asian 7,080, MELAA (Middle Eastern, Latin American and African) 1,040 and Other (including New Zealanders) 690. Within the Other ethnic group almost all (95 percent) of the babies had New Zealander as one of their ethnicities.

The total fertility rate for Māori women in the December 2007 year was 2.94 births per woman, up from 2.74 in 2006 and 2.77 in 1997, and well above the rate for the total population (2.17 births per woman). In the December 2007 year, there were 14,690 live births registered to Māori women. Māori women giving birth tend to be younger, with a median age of 25.8 years in the December 2007 year.

## **Regional births**

The Auckland region had the highest number of births in the December 2007 year (23,010), accounting for 36 percent of all live births registered in New Zealand. This was followed by Canterbury (7,550), Wellington (6,880) and Waikato (6,230). Together, these four regions accounted for just over two-thirds of all live births registered in the December 2007 year. This is consistent with their share of New Zealand's population.

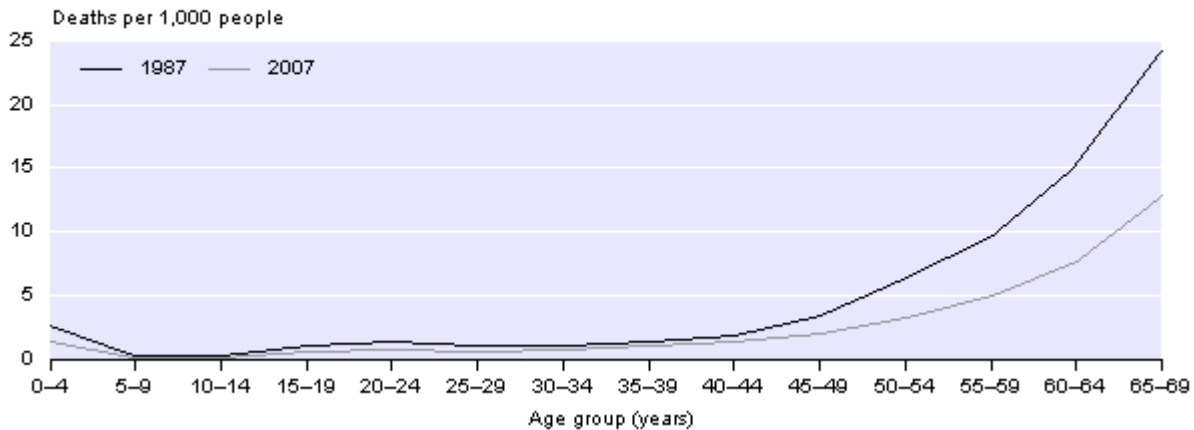
Births increased in all regions during the December 2007 year. Seven regions had higher percentage increases in birth numbers than the average for New Zealand (8.2 percent). These were Nelson (up 22.2 percent), Waikato and Canterbury (both up 11.4 percent), Gisborne (up 11.3 percent), Taranaki (up 10.9 percent), Southland (up 9.6 percent) and Otago (up 9.2 percent). Auckland had the highest numerical increase (up 1,680).

## **Deaths and longevity**

Deaths registered during the December 2007 year totalled 28,520, compared with 28,240 in the December 2006 year. There were 14,280 male deaths and 14,250 female deaths.

Deaths are becoming increasingly concentrated in the older age groups. The median age at death in the December 2007 year was 76.5 years for males and 82.5 years for females, compared with 71.5 for males and 77.1 for females in 1987. Only 5.6 percent of the deceased were aged under 40 years in the December 2007 year, compared with 8.9 percent in 1987.

### Age-specific Death Rates 1987 and 2007

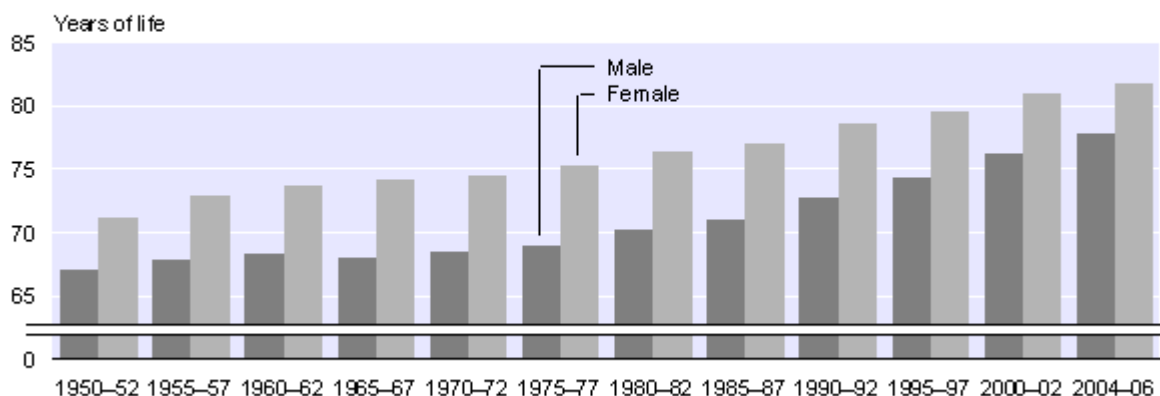


Between 1987 and 2007, death rates dropped significantly for all ages. In 2007, the death rates for those under 30 years and for those in the 50–64 year age groups were almost one-half the 1987 rates.

The crude death rate (deaths per 1,000 mean estimated resident population) was 6.7 in the December 2007 year, down from 7.3 in 1997. Because the crude death rate is influenced by the age structure of the population, it does not provide a true measure of the trends in mortality. Life tables are used to give a more accurate description of the mortality experience.

According to the New Zealand abridged period life table for 2004–2006, a newborn girl can be expected to live, on average, 81.9 years, and a newborn boy, 77.9 years. These levels represent longevity gains since 2003–2005 of 0.2 years for females and 0.4 years for males. While female life expectancy is still higher than male life expectancy, their longevity gap has narrowed from 6.4 years in 1975–1977 to 4.1 years in 2004–2006. Since 1975–1977, life expectancy at birth has increased by 6.5 years for females and 8.9 years for males.

### Life Expectancy at Birth By sex 1950–2006



**Note:** Abridged period life table 2004–2006.

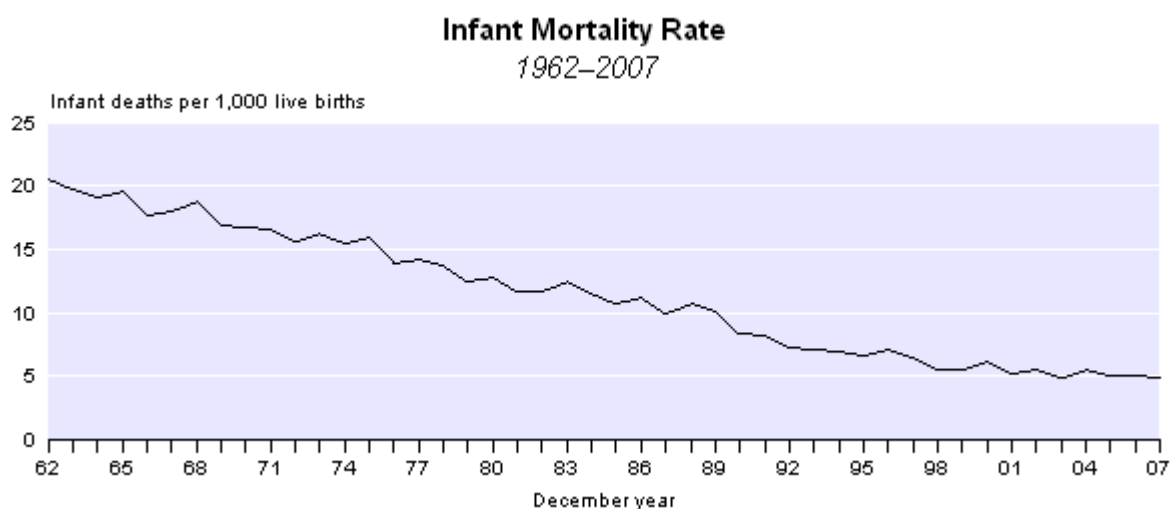
Abridged period life tables are produced annually for the total population only. Complete life tables are produced for Māori, non-Māori and total populations every five years. The latest complete period life tables available cover 2000–2002. Māori life expectancy is significantly lower than life expectancy for the total population. Life expectancy at birth for females of Māori ethnicity in 2000–2002 was 73.2 years, while for Māori males it was 69.0 years. The difference of about 7.6 years between Māori and the total population in 2000–2002 is slightly less than the estimated difference of 8.1 years in 1995–1997.

Life tables for other ethnicities, such as the broad Pacific and Asian ethnic groups, have not been produced because of the small number of death registrations and the uncertainty associated with ethnic identification and measurement.

## Infant mortality

During the December 2007 year, the number of infant deaths (under one year of age) registered in New Zealand totalled 320. The infant mortality rate (infant deaths per 1,000 live births) has dropped over the last 40 years. In the December 2007 year, the infant mortality rate was 4.9 per 1,000, down from 6.5 in the December 1997 year and 18.1 in 1967. The Māori infant mortality rate was 6.5 per 1,000 in the December 2007 year, down from 10.3 in 1997.

Neonatal deaths (under four weeks of age) made up 54 percent of infant deaths in the December 2007 year. The neonatal mortality rate (neonatal deaths per 1,000 live births) was 2.7 in 2007, down from 3.4 in the December 1997 year. The post-neonatal mortality rate (infant deaths over 28 days of age per 1,000 live births) has also dropped over the last decade, from 3.1 to 2.3 per 1,000.



Australia has also experienced a drop in infant mortality rates in the last decade. In 1996, New Zealand's infant mortality rate was 7.1 per 1,000 live births compared with 5.8 per 1,000 in Australia. By 2006, New Zealand's infant mortality rate had dropped to 5.1 per 1,000 and Australia's rate had dropped to 4.7 per 1,000. (Infant mortality rates for Australia beyond 2006 are not yet available.)

Scotland (4.5 per 1,000 live births), and England and Wales (5.0) had similar infant mortality rates to New Zealand's in 2006. However, a number of other low fertility rate countries had lower infant mortality rates: Sweden (2.8), Finland (2.8), Norway (3.2), France (3.6) and Denmark (3.8).

## Regional deaths

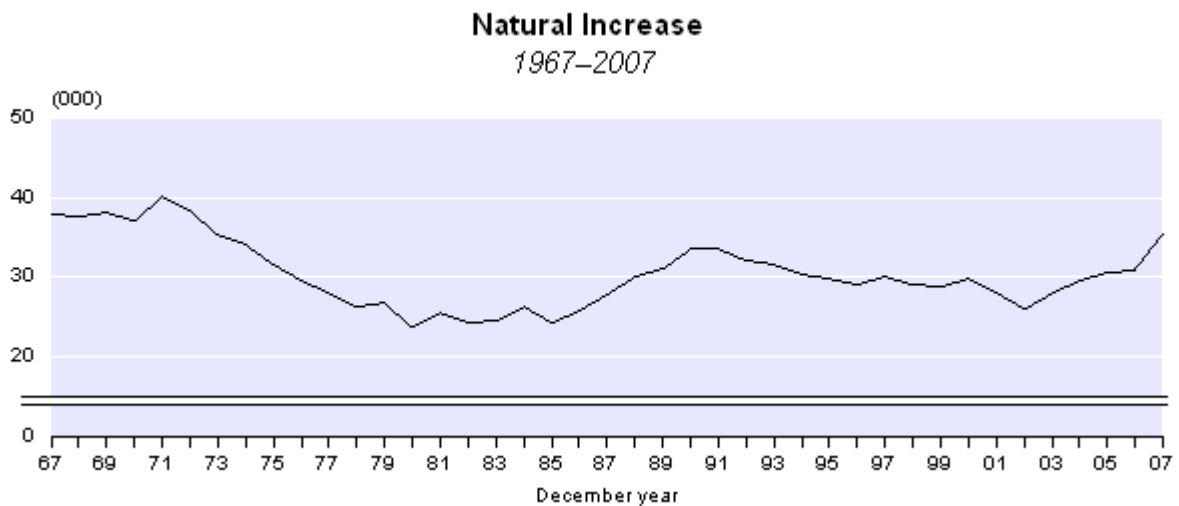
There were 7,220 deaths of residents in the Auckland region during the December 2007 year. Although the Auckland region is home to approximately one-third of New Zealand's population, it only accounted for one-quarter of New Zealand's deaths. This is due to the region's relatively young age structure. Only 10 percent of the Auckland region's population is aged 65 years and over, compared with 12 percent for the national population.

Based on the 2000–2002 abridged life tables for regions, life expectancy at birth across the regions ranged from 72.6 to 77.5 years for males and 78.9 to 82.2 years for females. The reasons for subnational differences in longevity and mortality are difficult to identify precisely and are probably due to a combination of interrelated factors, including the proportion of the population who are Māori, the proportion of the population who smoke (or have smoked), the proximity to health and hospital services, the degree of urbanisation and socio-economic factors.

More information about regional mortality can be found in Statistics New Zealand's report [\*New Zealand Life Tables \(2000–2002\)\*](#).

## Natural increase of population

Natural increase of population represents the excess of births over deaths. Births outnumbered deaths by 35,520 in the December 2007 year. This is the highest annual natural increase recorded since the December 1972 year, when births exceeded deaths by 38,410. However, the 2006-base national population projections show that natural increase is likely to decline over the next 50 years. Deaths are projected to outnumber births from 2055.



All regions in New Zealand had more births than deaths in the December 2007 year. Auckland's natural increase (15,790) made up 44 percent of the national natural increase. Auckland's large share of New Zealand's natural increase is due to the small number of deaths relative to the number of births and the size of its population.

## **Final figures and revised demographic rates**

The vital statistics and infant mortality rates for the December 2007 year quoted above, and contained in the appended tables, are final. Fertility rates and crude birth rates for 2001–2006 have been revised using new 2006-based population estimates. The revised 2006-based rates are not comparable with the 2001-based rates published in previous *Hot Off The Press* releases. Fertility rates and crude death rates for the December 2007 quarter and year are provisional. For further details see the Technical notes of this release.

For technical information contact:  
Anne Howard  
Christchurch 03 964 8700  
Email: [demography@stats.govt.nz](mailto:demography@stats.govt.nz)

## **Technical notes**

### **Births**

Birth data for the March, June, September and December quarters of 1998 are based on the number of notifications received by the Department of Internal Affairs. All other birth data are based on live births registered in New Zealand to mothers resident in New Zealand by date of registration. Birth data exclude late registrations under section 16 of the Births, Deaths, and Marriages Registration Act 1995. Section 16 births are those that were not registered in the ordinary way at the time the birth occurred.

### **Deaths**

Death data are based on deaths registered in New Zealand of New Zealand residents by date of registration.

### **Replacement level fertility**

Replacement level fertility is the average number of children a woman needs to have to produce one daughter who survives to childbearing age. Replacement level fertility is also described as the total fertility rate required for the population to replace itself in the long term, without migration.

The internationally accepted replacement level is 2.1 births per woman. Replacement level fertility allows for child mortality (children who die before reaching reproductive age) and the birth of more boys than girls. On average, throughout the world 105 boys are born for every 100 girls. The actual replacement level will vary slightly from country to country, depending on child mortality rates. In countries with high child mortality, the total fertility rate will need to be higher than 2.1 births per woman to achieve replacement level.

### **Total fertility rate**

The total fertility rate is the average number of live births that a woman would have during her life if she experienced the age-specific fertility rates of a given period (usually a year). It excludes the effect of mortality.

### **Children of this relationship**

The birth registration forms ask whether there are any other children of this relationship. However, it is possible that children from previous relationships are included. Unfortunately, this question does not produce an accurate measure of all live births to a woman (needed for accurate measures of birth parity). For privacy reasons it is deemed unacceptable to ask women about children outside their current relationship.

## Life tables

A life table is a standard demographic device that provides a detailed description of the mortality experience prevailing in a population during a given period. It comprises an array of measures, including probabilities of death, probabilities of survival and life expectancies at various ages. The 2000–2002 period life tables relating to New Zealand Māori, non-Māori and total populations were released by Statistics New Zealand on 30 March 2004. These are available on the Statistics NZ website ([www.stats.govt.nz](http://www.stats.govt.nz)). More details on life table methodology and results are included in *New Zealand Life Tables (2000–2002)*.

## Resident population concept

Unless otherwise stated, this release refers to vital events (births and deaths) registered in New Zealand by date of registration. It excludes births to women who normally reside overseas, and deaths of people who normally reside overseas. Demographic rates are calculated using the mean estimated resident population.

## Revised demographic rates

After each Census of Population and Dwellings, Statistics NZ routinely revises its intercensal population estimates based on the latest census usually resident population count. Statistics NZ has revised annual and quarterly population estimates for the 2001–2006 intercensal period. The mean estimated resident population is used as the denominator for calculating various demographic rates, such as total fertility rates, crude birth rates, crude death rates and age-specific birth and death rates.

All quarterly and annual demographic rates for the 2001–2006 period have been revised based on 2006-base population estimates. Revised rates are now available on the Statistics NZ website and on INFOS.

## Rounding

Birth and death figures contained in the tables attached to this release are unrounded. All other figures have been rounded. This may result in a total differing slightly from the sum of its components. Derived figures (for example percentage annual increase) have been calculated using unrounded data.

## More information

For more information, follow the [link](#) from the Technical notes of this release on the Statistics NZ website.

## Copyright

Information obtained from Statistics NZ may be freely used, reproduced, or quoted unless otherwise specified. In all cases Statistics NZ must be acknowledged as the source.

## **Liability**

While care has been used in processing, analysing and extracting information, Statistics NZ gives no warranty that the information supplied is free from error. Statistics NZ shall not be liable for any loss suffered through the use, directly or indirectly, of any information, product or service.

## **Timing**

Timed statistical releases are delivered using postal and electronic services provided by third parties. Delivery of these releases may be delayed by circumstances outside the control of Statistics NZ. Statistics NZ accepts no responsibility for any such delays.

### **Next release ...**

*Births and Deaths: March 2008 quarter* will be released on 14 May 2008.

Statistics New Zealand: The first source of independent information for your key decisions.

## Tables

The following tables can be downloaded from the Statistics New Zealand website in Excel format. If you do not have access to Excel, you may use the [Excel file viewer](#) to view, print and export the contents of the file.

### List of tables

1. Births, deaths and selected rates, 1991–2007
2. Live births by regional council, 1994–2007
3. Deaths by regional council, 1994–2007
4. Age-specific fertility rates, 1992–2007
5. Live births by mother's age, 1992–2007
6. Deaths by age and sex, 2007
7. Age-specific death rates, 1994–2007

**Births and Deaths: December 2007 quarter**

Table 1

**Births, Deaths and Selected Rates  
1991–2007**

INFOS series	Live births <sup>(1)</sup>	Crude birth rate <sup>(2)</sup>	Total fertility rate <sup>(3)</sup>	Deaths	Crude death rate <sup>(2)</sup>	Infant mortality rate <sup>(4)</sup>	Natural increase <sup>(5)</sup>
	VTBQ.SKTLZ VTBA.SKTLZ	DFMQ.SKHL DFMA.SKHL	DFMQ.SGHK DFMA.SGHK	VTDQ.S1T3 VTDA.S1T3	DMMQ.SPHL DMMA.SPHL	DMMQ.SRHL DMMA.SRHL	VTBQ.SJT VTBA.SJT
<b>Quarter ended December</b>							
1991	14,559	16.59	2.03	6,256	7.13	9.48	8,303
1992	14,211	16.03	1.98	6,186	6.98	7.04	8,025
1993	14,219	15.84	1.98	6,246	6.96	6.75	7,973
1994	13,968	15.35	1.93	6,187	6.80	6.80	7,781
1995	13,895	15.03	1.91	6,585	7.12	6.33	7,310
1996	13,966	14.88	1.90	6,392	6.81	6.44	7,574
1997	14,379	15.15	1.96	6,637	6.99	5.15	7,742
1998	14,208	14.86	1.96	6,312	6.60	5.52	7,896
1999	14,460	15.04	2.00	6,497	6.76	5.81	7,963
2000	13,579	14.04	1.90	6,508	6.73	5.67	7,071
2001	13,518	13.84 R	1.90 R	6,737	6.90 R	5.99	6,781
2002	13,527	13.60 R	1.88 R	6,692	6.73 R	5.77	6,835
2003	14,447	14.26 R	1.98 R	6,714	6.63 R	4.78	7,733
2004	14,140	13.77 R	1.93 R	7,207	7.02 R	6.01	6,933
2005	14,270	13.74 R	1.94 R	6,515	6.27 R	4.13	7,755
2006	14,348	13.65 R	1.95 R	6,578	6.26 R	5.16	7,770
2007	16,030	15.10 P	2.18 P	6,954	6.55 P	5.36	9,076
<b>Year ended December</b>							
1991	59,911	17.14	2.09	26,389	7.55	8.25	33,522
1992	59,166	16.75	2.06	27,115	7.67	7.22	32,051
1993	58,782	16.45	2.04	27,100	7.58	7.16	31,682
1994	57,321	15.83	1.98	26,953	7.44	7.00	30,368
1995	57,671	15.69	1.98	27,813	7.57	6.66	29,858
1996	57,280	15.34	1.96	28,255	7.57	7.11	29,025
1997	57,604	15.23	1.96	27,471	7.26	6.54	30,133
1998	57,085	14.96	1.96	26,206	6.87	5.51	30,879
1999	57,053	14.87	1.97	28,122	7.33	5.56	28,931
2000	56,605	14.66	1.98	26,660	6.91	6.11	29,945
2001	55,799	14.36 R	1.97 R	27,825	7.16 R	5.30	27,974
2002	54,021	13.67 R	1.89 R	28,065	7.10 R	5.55	25,956
2003	56,134	13.94 R	1.93 R	28,010	6.95 R	4.93	28,124
2004	58,073	14.20 R	1.98 R	28,419	6.95 R	5.58	29,654
2005	57,745	13.96 R	1.97 R	27,034	6.54 R	5.11	30,711
2006	59,193	14.14 R	2.01 R	28,245	6.75 R	5.07	30,948
2007	64,044	15.14 P	2.17 P	28,522	6.74 P	4.95	35,522

(1) Excludes late registrations under section 16 of the Births, Deaths, and Marriages Registration Act 1995. (Births that were not registered in the ordinary way at the time the birth occurred. Such registrations can occur as late as retirement age.)

(2) Live births or deaths per 1,000 mean estimated resident population.

(3) The average number of live births that a woman would have during her life if she experienced the age-specific fertility rates of a given period (usually a year). It excludes the effect of mortality.

(4) Deaths of children under one year of age per 1,000 live births.

(5) Excess of live births over deaths.

**Note:**

(a) Death data are based on deaths registered in New Zealand of New Zealand residents by date of registration.

(b) Birth data for the March, June, September and December 1998 quarters are based on the number of notifications received by the Department of Internal Affairs. All other birth data are based on live births registered in New Zealand to mothers resident in New Zealand by date of registration.

(c) For analytical purposes, registration-based data for 1998 is available on INFOS.

**Symbols:**

P provisional

R revised

**Births and Deaths: December 2007 quarter**

Table 2

**Live Births by Regional Council  
1994–2007**

Regional council	December year													
	1994	1995	1996	1997	1998	1999	2000	2001	2002	2003	2004	2005	2006	2007
Northland region	2,272	2,422	2,240	2,213	2,177	2,157	2,123	1,994	1,919	2,024	2,069	2,069	2,244	2,321
Auckland region	18,052	18,402	18,958	19,027	18,455	19,286	19,673	19,406	19,327	20,112	20,956	20,747	21,331	23,007
Waikato region	5,829	5,877	5,551	5,920	5,523	5,843	5,386	5,501	5,229	5,440	5,583	5,666	5,590	6,230
Bay of Plenty region	3,645	3,682	3,746	4,000	3,712	3,833	3,690	3,615	3,536	3,620	3,833	3,771	3,842	4,055
Gisborne region	951	906	871	836	753	771	773	766	759	703	751	778	720	801
Hawke's Bay region	2,401	2,365	2,424	2,313	2,118	2,164	2,176	2,143	2,058	2,079	2,164	2,115	2,164	2,318
Taranaki region	1,676	1,617	1,537	1,500	1,538	1,496	1,426	1,367	1,308	1,373	1,319	1,410	1,453	1,611
Manawatu-Wanganui region	3,730	3,694	3,579	3,531	3,235	3,218	3,308	3,071	2,905	2,914	2,918	3,095	3,165	3,297
Wellington region	6,659	6,541	6,450	6,349	6,432	6,566	6,449	6,482	5,985	6,384	6,327	6,226	6,442	6,876
Tasman region	520	499	464	490	489	504	526	502	508	536	557	513	549	552
Nelson region	563	507	543	515	527	519	546	545	519	528	579	519	523	639
Marlborough region	491	543	469	539	427	471	472	441	415	459	479	473	484	515
West Coast region	484	471	491	428	403	403	361	396	330	334	399	338	390	405
Canterbury region	6,196	6,341	6,249	6,333	5,892	6,196	6,177	6,243	5,900	6,258	6,631	6,605	6,777	7,547
Otago region	2,415	2,366	2,314	2,251	2,110	2,146	2,145	2,065	2,072	2,044	2,173	2,152	2,150	2,347
Southland region	1,419	1,422	1,378	1,341	1,252	1,252	1,270	1,189	1,194	1,229	1,258	1,211	1,233	1,351
Region not stated/ area outside region	18	16	16	18	306	228	104	73	57	97	77	57	136	172
<b>New Zealand</b>	<b>57,321</b>	<b>57,671</b>	<b>57,280</b>	<b>57,604</b>	<b>55,349</b>	<b>57,053</b>	<b>56,605</b>	<b>55,799</b>	<b>54,021</b>	<b>56,134</b>	<b>58,073</b>	<b>57,745</b>	<b>59,193</b>	<b>64,044</b>

**Note:**  
 (a) Birth data are based on live births registered in New Zealand to mothers resident in New Zealand by date of registration.  
 (b) Registered births for 1998 are lower than expected, because of a small change to the rate at which births were registered during 1998.

Table 3

**Deaths by Regional Council**  
1994–2007

Regional council	December year													
	1994	1995	1996	1997	1998	1999	2000	2001	2002	2003	2004	2005	2006	2007
Northland region	1,110	1,160	1,118	1,154	1,088	1,204	1,105	1,209	1,286	1,254	1,190	1,169	1,162	1,223
Auckland region	7,003	7,182	7,384	7,279	6,815	7,169	6,801	7,048	7,141	7,164	7,240	6,873	7,152	7,216
Waikato region	2,413	2,362	2,520	2,470	2,508	2,630	2,493	2,580	2,535	2,541	2,646	2,519	2,752	2,789
Bay of Plenty region	1,680	1,859	1,933	1,874	1,721	1,977	1,879	2,049	1,985	1,971	2,074	1,956	2,152	2,139
Gisborne region	389	451	405	417	358	436	387	376	401	411	361	376	436	376
Hawke's Bay region	1,243	1,215	1,239	1,265	1,172	1,292	1,203	1,235	1,255	1,328	1,219	1,276	1,253	1,282
Taranaki region	901	902	888	777	754	910	878	906	890	921	919	910	860	937
Manawatu-Wanganui region	1,937	1,971	1,996	1,825	1,812	1,972	1,901	1,992	1,919	1,909	1,966	1,837	1,967	1,812
Wellington region	2,770	2,999	3,001	2,993	2,772	2,943	2,797	2,909	2,922	2,929	2,924	2,744	2,826	2,866
Tasman region	283	301	314	275	251	278	299	307	287	290	308	315	341	323
Nelson region	344	360	350	349	315	349	352	344	392	368	382	344	365	381
Marlborough region	284	357	344	326	298	324	353	353	379	328	386	372	361	368
West Coast region	290	293	305	305	320	288	227	277	268	268	255	244	242	255
Canterbury region	3,951	3,993	4,001	3,806	3,625	3,904	3,637	3,830	3,975	3,869	4,178	3,816	4,016	4,107
Otago region	1,513	1,538	1,591	1,582	1,510	1,564	1,487	1,549	1,537	1,596	1,495	1,429	1,458	1,530
Southland region	834	861	847	758	763	764	785	805	831	787	792	723	766	784
Region not stated/ area outside region	8	9	19	16	124	118	76	56	62	76	84	131	136	134
<b>New Zealand</b>	<b>26,953</b>	<b>27,813</b>	<b>28,255</b>	<b>27,471</b>	<b>26,206</b>	<b>28,122</b>	<b>26,660</b>	<b>27,825</b>	<b>28,065</b>	<b>28,010</b>	<b>28,419</b>	<b>27,034</b>	<b>28,245</b>	<b>28,522</b>

**Note:** Deaths are based on deaths registered in New Zealand of New Zealand residents by date of registration.

Table 4

**Age-specific Fertility Rates<sup>(1)</sup>**  
1992–2007

December year	Age of mother (years)								Median age of mother (years)
	Under 15 <sup>(2)</sup>	15–19	20–24	25–29	30–34	35–39	40–44	45+ <sup>(3)</sup>	
1992	0.2	32.9	91.0	135.9	107.4	39.2	6.2	0.3	28.2
1993	0.2	32.2	88.8	133.5	107.6	40.3	6.3	0.3	28.3
1994	0.3	31.4	83.4	127.4	106.0	41.4	6.9	0.4	28.5
1995	0.3	33.4	83.0	123.4	106.1	43.5	7.2	0.4	28.6
1996	0.2	33.0	81.2	119.2	105.3	44.6	8.0	0.4	28.8
1997	0.4	32.8	79.1	116.1	108.0	47.4	8.8	0.4	29.1
1998	0.2	29.2	75.3	110.6	107.1	48.1	8.5	0.4	29.3
1999	0.2	28.9	77.4	114.9	112.3	51.0	9.6	0.4	29.5
2000	0.2	28.2	77.5	113.5	113.1	52.5	10.1	0.4	29.7
2001 R	0.2	27.5	76.1	113.3	111.7	53.7	10.4	0.5	29.8
2002 R	0.2	25.6	70.1	105.3	109.9	54.7	11.1	0.5	30.1
2003 R	0.2	25.9	68.6	107.7	112.4	58.7	12.1	0.6	30.2
2004 R	0.2	27.1	70.4	107.8	117.6	60.2	12.1	0.6	30.3
2005 R	0.2	27.2	67.6	104.9	117.1	62.3	12.0	0.6	30.4
2006 R	0.2	28.1	70.9	105.2	119.3	63.7	12.3	0.7	30.3
2007 P	0.3	31.3	75.8	113.8	127.3	70.5	13.8	0.7	30.1

(1) Per 1,000 mean estimated female population in each age group.

(2) Per 1,000 mean estimated female population aged 10–14 years.

(3) Per 1,000 mean estimated female population aged 45–49 years.

**Note:** Rates for 1998 are lower than expected, because of a small change to the rate at which births were registered during 1998.

**Symbols:**

P provisional

R revised

Table 5

**Live Births by Mother's Age**  
1992–2007

December year	Age of mother (years)								All ages
	Under 15	15–19	20–24	25–29	30–34	35–39	40–44	45+	
1992	30	4,596	13,344	19,337	15,883	5,177	767	32	59,166
1993	28	4,358	13,055	18,779	16,278	5,464	783	37	58,782
1994	33	4,170	12,189	17,969	16,245	5,800	870	45	57,321
1995	38	4,406	11,958	17,628	16,370	6,296	931	44	57,671
1996	27	4,379	11,399	17,397	16,253	6,705	1,066	54	57,280
1997	48	4,353	10,817	17,116	16,643	7,374	1,206	47	57,604
1998	34	3,890	9,986	16,160	16,362	7,665	1,200	52	55,349
1999	30	3,854	10,023	16,427	17,067	8,207	1,389	56	57,053
2000	31	3,787	9,881	15,766	17,163	8,430	1,497	50	56,605
2001	28	3,745	9,751	15,100	17,009	8,516	1,580	70	55,799
2002	29	3,593	9,264	13,747	16,926	8,655	1,741	66	54,021
2003	29	3,755	9,467	13,990	17,523	9,304	1,975	91	56,134
2004	36	4,008	9,960	14,071	18,290	9,602	2,016	90	58,073
2005	37	4,099	9,709	13,798	17,977	10,029	2,003	93	57,745
2006	35	4,338	10,308	14,082	17,867	10,401	2,054	108	59,193
2007	52	4,903	11,093	15,516	18,499	11,600	2,268	113	64,044

**Note:** Birth registrations for 1998 and 1999 December years are lower than expected because of a small change to the rate at which births were registered during 1998.

Table 6

**Deaths by Age and Sex**  
2007

Age (years)	Number			Percent		
	Male	Female	People	Male	Female	People
0	174	143	317	1.2	1.0	1.1
1-4	42	41	83	0.3	0.3	0.3
5-9	24	13	37	0.2	0.1	0.1
10-14	29	26	55	0.2	0.2	0.2
15-19	119	66	185	0.8	0.5	0.6
20-24	148	56	204	1.0	0.4	0.7
25-29	117	43	160	0.8	0.3	0.6
30-34	144	81	225	1.0	0.6	0.8
35-39	205	133	338	1.4	0.9	1.2
40-44	253	210	463	1.8	1.5	1.6
45-49	409	240	649	2.9	1.7	2.3
50-54	521	352	873	3.6	2.5	3.1
55-59	705	520	1,225	4.9	3.6	4.3
60-64	916	619	1,535	6.4	4.3	5.4
65-69	1,203	883	2,086	8.4	6.2	7.3
70-74	1,575	1,080	2,655	11.0	7.6	9.3
75-79	2,152	1,601	3,753	15.1	11.2	13.2
80-84	2,445	2,294	4,739	17.1	16.1	16.6
85-89	1,835	2,755	4,590	12.9	19.3	16.1
90-94	963	2,102	3,065	6.7	14.8	10.7
95-99	257	821	1,078	1.8	5.8	3.8
100+	39	168	207	0.3	1.2	0.7
All ages	14,275	14,247	28,522	100.0	100.0	100.0
Median age at death	76.47	82.47	79.32	...	...	...

**Note:** Death data are based on deaths registered in New Zealand of New Zealand residents by date of registration.

**Symbol:**

... not applicable

Table 7

**Age-specific Death Rates<sup>(1)</sup>**  
1994–2007

Age group (years)	December year													
	1994	1995	1996	1997	1998	1999	2000	2001 R	2002 R	2003 R	2004 R	2005 R	2006 R	2007 P
0–4	1.7	1.6	1.7	1.6	1.3	1.4	1.5	1.3	1.4	1.3	1.4	1.3	1.3	1.4
5–9	0.2	0.2	0.2	0.2	0.2	0.1	0.2	0.2	0.2	0.1	0.1	0.2	0.1	0.1
10–14	0.2	0.2	0.2	0.2	0.3	0.2	0.2	0.2	0.2	0.2	0.2	0.2	0.1	0.2
15–19	0.7	0.8	1.0	0.9	0.8	0.7	0.6	0.7	0.6	0.7	0.7	0.7	0.6	0.6
20–24	1.0	1.2	0.9	0.9	0.8	0.8	0.7	0.8	0.7	0.7	0.7	0.7	0.6	0.7
25–29	1.0	1.0	1.0	1.0	0.9	0.9	0.9	0.8	0.8	0.7	0.7	0.7	0.7	0.6
30–34	1.0	1.0	1.0	1.0	0.9	0.9	0.9	0.9	0.9	0.9	0.7	0.8	0.7	0.8
35–39	1.2	1.1	1.1	1.1	1.1	1.1	1.0	1.0	1.1	1.1	1.1	1.0	1.0	1.1
40–44	1.7	1.6	1.4	1.7	1.7	1.6	1.5	1.5	1.5	1.5	1.4	1.5	1.4	1.5
45–49	2.5	2.7	2.8	2.5	2.3	2.4	2.4	2.1	2.3	2.3	2.3	2.2	2.2	2.1
50–54	4.7	4.8	4.4	4.3	3.7	3.8	3.7	3.6	3.5	3.6	3.5	3.2	3.2	3.2
55–59	7.3	7.4	7.1	6.9	6.6	6.8	6.1	5.7	5.9	5.5	5.2	5.2	5.1	5.0
60–64	12.2	12.0	12.6	11.1	11.0	11.1	9.6	10.0	9.3	8.9	8.7	8.2	8.2	7.8
65–69	19.5	19.7	19.3	18.8	17.3	17.0	16.4	16.1	15.4	14.8	14.4	13.0	13.0	12.8
70–74	31.3	30.9	30.6	28.8	26.5	28.1	25.8	26.5	25.4	24.7	23.8	21.3	22.3	21.7
75–79	49.5	50.1	48.4	44.4	43.2	45.8	42.5	41.4	41.8	39.7	39.3	35.8	37.0	36.0
80–84	82.1	79.7	82.0	78.8	71.7	74.5	69.8	70.7	68.6	68.6	68.9	65.0	62.6	62.5
85–89	133.3	134.3	135.1	127.6	117.1	127.9	116.3	125.5	124.7	120.7	124.1	109.6	114.6	111.3
90+	234.1	246.4	246.7	235.9	216.6	244.2	214.0	234.4	236.0	229.9	232.4	214.4	231.1	222.0

(1) Per 1,000 mean estimated population in each age group.

**Symbols:**

P provisional

R revised