



Embargoed until 10:45am – 16 February 2007

Births and Deaths

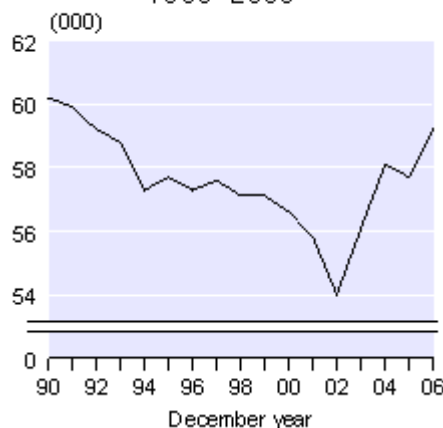
December 2006 quarter

Highlights

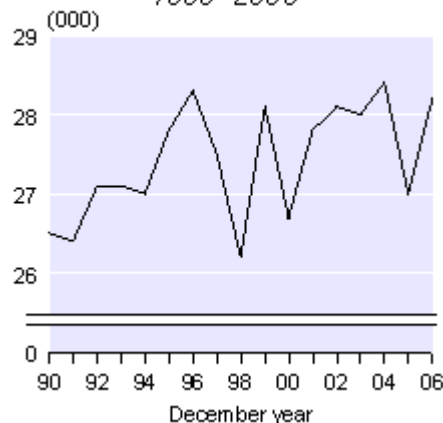
In the December 2006 year:

- There were **59,190** live births registered in New Zealand.
- New Zealand women averaged **2.05** births per woman.
- The median age of women giving birth was **30** years.
- The median age of women giving birth to their first child was **28** years.
- The infant mortality rate was **5.1** deaths per 1,000 live births.
- There were **28,240** deaths registered.
- Only **5** percent of the deaths were of people aged less than 40 years.
- Births exceeded deaths by **30,950**.

Live Births
1990–2006



Deaths
1990–2006



Brian Pink
Government Statistician

16 February 2006
Cat 32.900 Set 06/07 – 120

There is a companion Media Release published – [Births and Deaths: December 2006 quarter](#).

Commentary

Live births

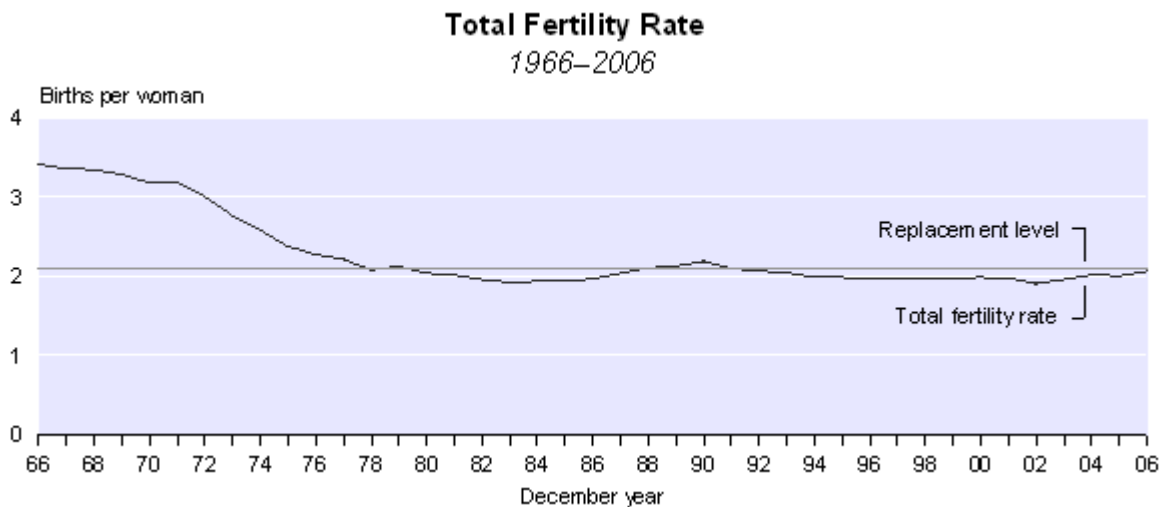
There were 59,190 live births registered in New Zealand in the December 2006 year. During the December 2006 year, the births of 30,240 boys and 28,950 girls were registered to mothers resident in New Zealand. There are normally more boys born than girls, with an average of 105 boys born for every 100 girls during the last decade.

Live births registered in the December 2006 quarter totalled 14,350, an increase of 80 compared with the December 2005 quarter.

Annual fertility rates

The latest annual fertility rates indicate that New Zealand women average 2.05 births per woman. New Zealand's total fertility rate has been relatively stable over the last two decades, averaging 2.01 births per woman. The level required by a population to replace itself in the long term without migration is 2.1 births per woman. Apart from a short period around 1990, fertility in New Zealand has been slightly below the 'replacement level' since 1980.

In New Zealand, the transition to sub-replacement fertility occurred later than in other developed countries. The transition occurred in Denmark and Sweden in the late 1960s; in Germany, the United States and Canada in the early 1970s; and in other developed countries, including Australia, in the mid-1970s.

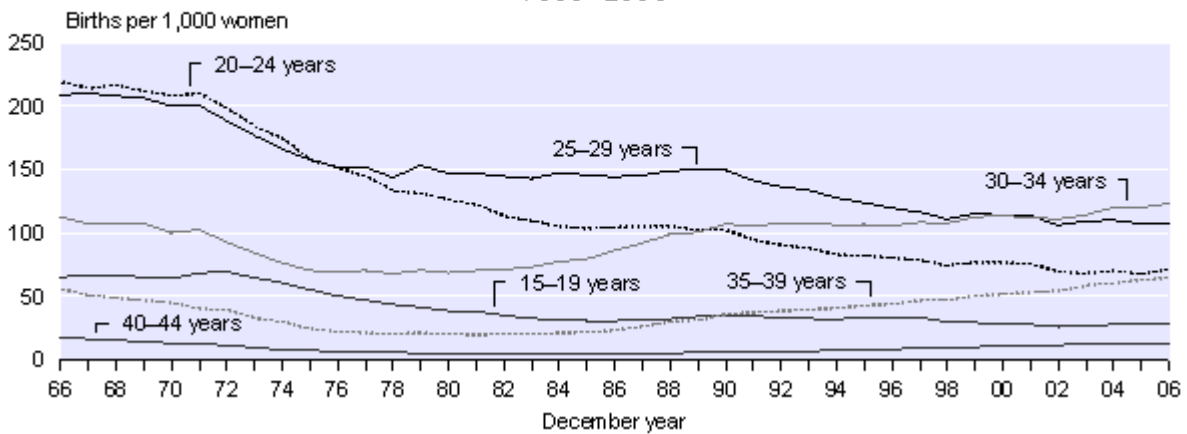


Sub-replacement fertility remains a common demographic phenomenon among developed countries, including France (1.9 births per woman), Australia, Denmark, England and Wales, Norway, Sweden (all 1.8) and the Netherlands (1.7). Some countries, notably Japan, Italy and Spain, have recorded very low fertility levels in recent years (fewer than 1.3 births per woman). The United States' total fertility rate has been similar to New Zealand's in the last few years.

Trend towards later childbearing

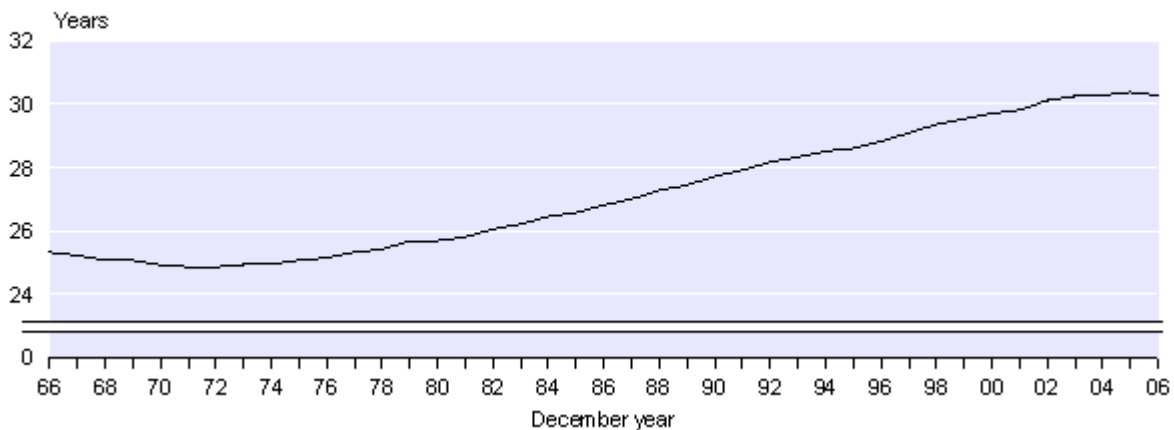
Although the total fertility rate has been relatively stable over the last two decades, there has been a significant shift in age-specific fertility rates. In the December 2006 year, women aged 30–34 years had the highest fertility rate (123 births per 1,000 women aged 30–34 years), followed by those aged 25–29 years (107 per 1,000). Conversely, in 1996, women aged 25–29 years had a higher fertility rate (119 per 1,000) than women aged 30–34 years (105 per 1,000). In 1976, the total fertility rate was 2.3 births per woman. At that time, women aged 20–24 years and 25–29 years had a fertility rate of 152 births per 1,000 women in each age group, significantly higher than any other age group.

Age-specific Fertility Rates
1966–2006



Between the 1996 and 2006 December years, fertility rates for women aged under 30 years dropped. The largest decrease occurred among women aged 15–19 years (down 14 percent), followed by those aged 20–24 years (11 percent) and 25–29 years (10 percent). In contrast, fertility rates for women aged 30 years and over have increased over the last decade (up 16 percent and 46 percent for women aged 30–34 years and 35–39 years, respectively).

Median Age of Mother
1966–2006



On average, New Zealand women now have children about five years later than their counterparts in the mid 1970s. The median age (half are younger and half older than this age) of New Zealand women giving birth is now 30.3 years, compared with 28.8 years in 1996 and 25.1 years in 1976. The median age of women giving birth to their first child (based on children in the current relationship only) was 28 years in the year ended December 2006.

Births by ethnicity

The 2006 Census showed that 10 percent of the census usually resident population identified with more than one ethnic group. Births registrations for the December 2006 year, show that 13 percent of mothers and 25 percent of babies identified with more than one ethnic group. This suggests that younger generations are becoming increasingly multi-cultural. Two-thirds of Māori babies and one-half of Pacific babies belonged to multiple ethnic groups compared with one-third of births within the European and Asian ethnic groups.

The total fertility rate for Māori women in the December 2006 year was 2.70 births per woman, which is well above the rate for the total population (2.05 births per woman). In the December 2006 year, there were 13,650 births registered to Māori women. Māori women giving birth tend to be younger; their median age was 25.9 years in the December 2006 year.

Regional births

The Auckland region had the highest number of births in the December 2006 year (21,330), accounting for 36 percent of all live births registered in New Zealand. This was followed by Canterbury (6,780), Wellington (6,440) and Waikato (5,590). Together, these four regions accounted for about two-thirds of all live births registered in the December 2006 year. This is consistent with their share of New Zealand's population.

Deaths and longevity

Deaths registered during the December 2006 year totalled 28,240, compared with 27,030 in the December 2005 year. There were 6,580 deaths in the December 2006 quarter, a similar number to those registered in the December 2005 quarter (6,520).

The median age at death in the December 2006 year was 76.3 years for males and 82.3 years for females. Only 5.3 percent were aged under 40 years. There were 13,920 male deaths and 14,320 female deaths.

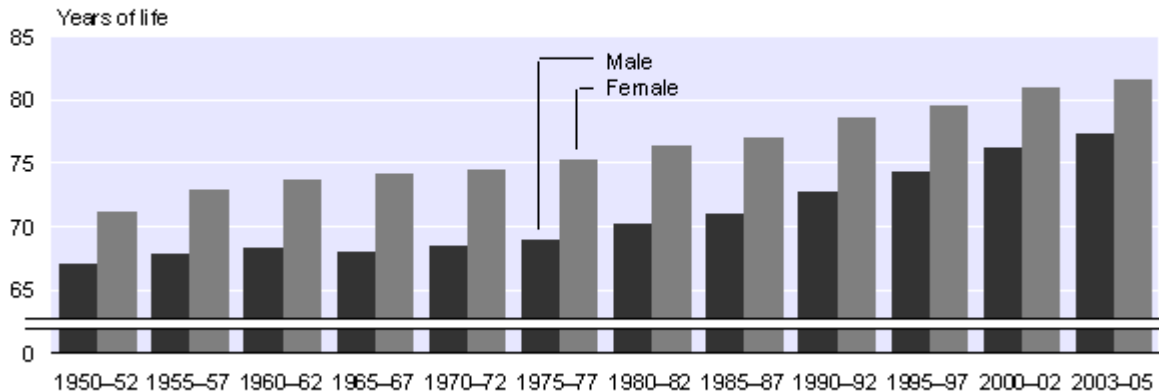
The crude death rate (deaths per 1,000 mean estimated resident population) was 6.8 in the December 2006 year, down from 7.6 in 1996. Because the crude death rate is influenced by the age structure of the population, it does not provide a true measure of the trends in mortality. Life tables are used to give a more accurate description of the mortality experience.

According to the New Zealand abridged period life table for 2003–2005, a newborn girl can be expected to live, on average, 81.7 years, and a newborn boy 77.5 years. These levels represent longevity gains since 1995–1997 of 2.0 years for females and 3.1 years for males. These gains were due largely to the reduction in mortality rates at late-working and retirement ages (50–89 years). Since 1975–1977, life expectancy at birth has increased by 6.3 years for females and 8.5 years for males.

Life Expectancy at Birth

By sex

1950–2005



Note: Abridged period life tables 2003–2005

Abridged period life tables are produced annually for the total population only. Complete life tables are produced, for the Māori, non-Māori and total populations every five years. The latest complete period life tables available cover the period 2000–2002. Māori life expectancy is significantly lower than life expectancy for the total population. Life expectancy at birth for females of Māori ethnicity in 2000–2002 was 73.2 years, while for Māori males it was 69.0 years. The difference of about 7.6 years between Māori and the total population is slightly less than the estimated difference of 8.1 years in 1995–1997.

Life tables for other ethnicities, such as the broad Pacific and Asian ethnic groups, have not been produced because of the small number of death registrations and the uncertainty associated with ethnic identification and measurement.

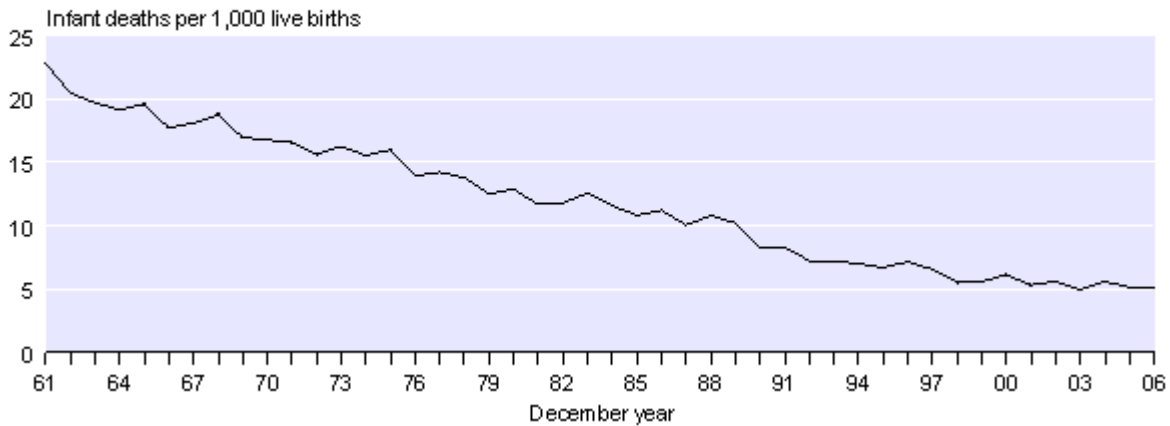
Infant and foetal death

During the December 2006 year, the number of infant deaths (under one year of age) registered in New Zealand totalled 300. The infant mortality rate (infant deaths per 1,000 live births) has dropped over the last 30 years. In the December 2006 year, the infant mortality rate was 5.1 per 1,000, down from 7.1 in the December 1996 year and 13.9 in 1976. The Māori infant mortality rate was 6.7 per 1,000 in the December 2006 year, down from 11.5 per 1,000 in 1996.

Neonatal deaths (under four weeks of age) made up 53 percent of infant deaths in the December 2006 year. The neonatal mortality rate (neonatal deaths per 1,000 live births) was 2.7 in 2006, down from 3.7 in the December 1996 year. The post-neonatal mortality rate (infant deaths over 28 days of age per 1,000 live births) has also dropped over the last decade from 3.4 to 2.4 per 1,000.

Infant Mortality Rate

1961–2006



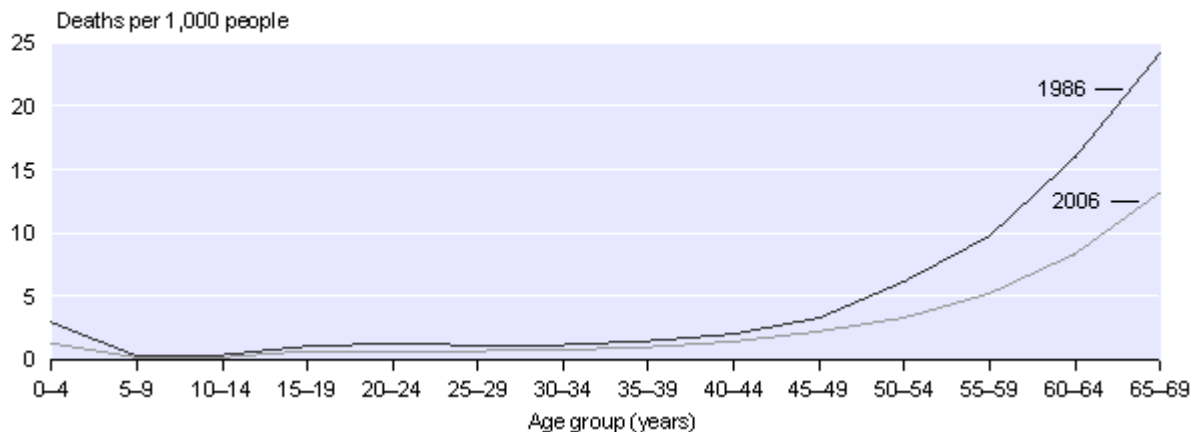
Age-specific death rates

Age-specific death rates show a rapid decline following infancy with children aged 4–9 and 10–14 years having the lowest death rates (12 and 14 deaths per 100,000 children in each age group, respectively). Having survived the first year of life a child has a very good chance of surviving childhood. Accidents and suicide push up death rates in the late teens (14–19) and early twenties (20–24). Their death rates are roughly four times higher than in childhood (64 and 61 deaths per 100,000 in each age group, respectively). Despite this increase in mortality during the late teens, death rates remain low and increase only very gradual until the older ages where rates increase dramatically with age (1,313 per 100,000 people aged 65–69 and 11,177 per 100,000 people aged 85–89). Female death rates are lower than male death rates in all age groups.

Between 1986 and 2006 death rates dropped significantly for all ages. In 2006 child death rates (under 15 years) were less than half the 1986 rates. Between 15 and 49 years of age, rates had dropped by roughly one third, while for the 50 to 64 year age groups rates have been reduced by almost one-half in the last 20 years. Overall deaths are increasingly concentrated in the older ages, with 78 percent of the deceased aged 65 or over in 2006 compared with 71 percent in 1986.

Age-specific Death Rates

1986 and 2006



Age-specific deaths by five-years age group and sex are available for each year from 1986 to 2006 on the [Statistics New Zealand website](#).

Regional deaths

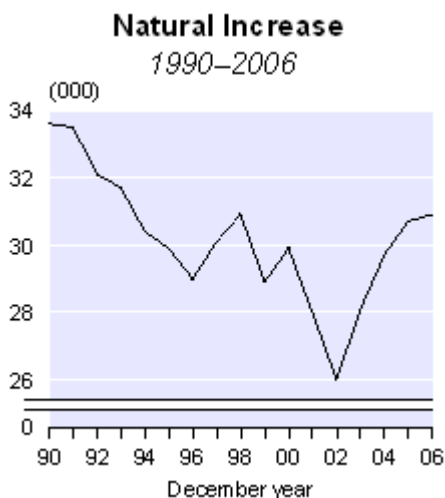
There were 7,150 deaths of residents in the Auckland region during the December 2006 year. Although the Auckland region is home to approximately one-third of New Zealand's population, it only accounted for one-quarter of New Zealand's deaths. This is due to the region's relatively young population age structure. Only 10 percent of the Auckland region's population is aged 65 years and over, compared with 12 percent for the national population.

Based on the 2000–2002 abridged life tables for regions, life expectancy at birth across the regions ranged from 72.6 to 77.5 years for males and 78.9 to 82.2 years for females. The reasons for subnational differences in longevity and mortality are difficult to identify precisely and are probably due to a combination of interrelated factors, including the proportion of the population who are Māori, the proportion of the population who smoke (or have smoked), the proximity to health and hospital services, the degree of urbanisation and socio-economic factors. More information about regional mortality can be found in Statistics New Zealand's report [*New Zealand Life Tables \(2000–2002\)*](#).

Natural increase of population

Natural increase of population represents the excess of births over deaths. Births outnumbered deaths by 30,950 in the December 2006 year. This is the highest natural increase recorded since the December 1993 year, when births exceeded deaths by 31,680. However, the 2004-base national population projections show that natural increase is likely to decline over the next 50 years. This will be due predominantly to an increase in deaths as the large number of people born in the 1950s–1970s reach the older ages. Deaths are projected to outnumber births from 2042.

During the December 2006 year, New Zealand's population increased by 45,100 (1.1 percent). Natural increase contributed roughly two-thirds of this population growth, and net migration the remaining one-third. These proportions have varied in recent years because of significant shifts in the migration balance.



All regions in New Zealand had more births than deaths in the December 2006 year. Auckland's natural increase (14,180) made up 46 percent of the national natural increase. Auckland's large share of New Zealand's natural increase is due to the small number of deaths relative to the number of births and the size of its population.

Final figures

The vital statistics and infant mortality rates for the December 2006 year quoted above, and contained in the appended tables, are final. Fertility rates, crude death rates and age-specific death rates for the December 2006 quarter and year are provisional. Final demographic indices will be released in May 2007.

For technical information contact:
Anne Howard
Christchurch 03 964 8700
Email: demography@stats.govt.nz

Technical notes

Births

Birth data for the March, June, September and December quarters of 1998 are based on the number of notifications received by the Department of Internal Affairs. All other birth data are based on live births registered in New Zealand to mothers resident in New Zealand by date of registration. Birth data exclude late registrations under section 16 of the Births, Deaths, and Marriages Registration Act 1995. Section 16 births are those that were not registered in the ordinary way at the time the birth occurred. Such registrations can occur as late as retirement age.

Deaths

Death data are based on deaths registered in New Zealand of New Zealand residents by date of registration.

Replacement level fertility

Replacement level fertility is the average number of children a woman needs to have to produce one daughter who survives to childbearing age. Replacement level fertility is also described as the total fertility rate required for the population to replace itself in the long term, without migration.

The internationally accepted replacement level is 2.1 births per woman. Replacement level fertility allows for child mortality (children who die before reaching reproductive age) and the birth of more boys than girls. On average, throughout the world 105 boys are born for every 100 girls. The actual replacement level will vary slightly from country to country, depending on child mortality rates. In countries with high child mortality, the total fertility rate will need to be higher than 2.1 births per woman to achieve replacement level.

Total fertility rate

The total fertility rate is the average number of live births that a woman would have during her life if she experienced the age-specific fertility rates of a given period (usually a year). It excludes the effect of mortality.

Children of this relationship

The birth registration forms ask whether there are any other children of this relationship. However, it is possible that children from previous relationships are included. Unfortunately, this question does not produce an accurate measure of all live births to a woman (needed for accurate measures of birth parity). For privacy reasons it is deemed unacceptable to ask women about children outside their current relationship.

Life tables

A life table is a standard demographic device that provides a detailed description of the mortality experience prevailing in a population during a given period. It comprises an array of measures, including probabilities of death, probabilities of survival and life expectancies at various ages. The 2000–2002 period life tables relating to New Zealand Māori, non-Māori and total populations were released by Statistics New Zealand on 30 March 2004. These are available on the Statistics New Zealand website (www.stats.govt.nz). More details on life table methodology and results are included in *New Zealand Life Tables (2000–2002)*.

The 1995–1997 period life tables for the total New Zealand, Māori and non-Māori populations published in July 1998 have been revised. For all populations, the revision incorporates updated population estimates (at 30 June 1996) and a revised method of estimating death rates at the oldest ages. For the Māori life table, smooth adjustment factors have also been applied to Māori deaths, by age, to allow for under-reporting of Māori deaths (relative to the Māori population). For the non-Māori life table, corresponding adjustments have been applied to non-Māori deaths, by age. These adjustment factors lower Māori life expectancy at birth by about 0.7 years and raise non-Māori life expectancy at birth by about 0.1 years. Revised figures for 1995–1997 are included in the publication entitled *New Zealand Life Tables (2000–2002)*.

Resident population concept

Unless otherwise stated, this release refers to vital events (births and deaths) registered in New Zealand by date of registration. It excludes births to women who normally reside overseas, and deaths of people who normally reside overseas. Demographic rates are calculated using the mean estimated resident population.

Rounding

Birth and death figures contained in the tables attached to this release are unrounded. All other figures have been rounded. This may result in a total differing slightly from the sum of its components. Derived figures (for example percentage annual increase) have been calculated using unrounded data.

More information

For more information, follow the [link](#) from the Technical notes of this release on the Statistics New Zealand website.

Copyright

Information obtained from Statistics NZ may be freely used, reproduced, or quoted unless otherwise specified. In all cases Statistics NZ must be acknowledged as the source.

Liability

While care has been used in processing, analysing and extracting information, Statistics NZ gives no warranty that the information supplied is free from error. Statistics NZ shall not be liable for any loss suffered through the use, directly or indirectly, of any information, product or service.

Timing

Timed statistical releases are delivered using postal and electronic services provided by third parties. Delivery of these releases may be delayed by circumstances outside the control of Statistics NZ. Statistics NZ accepts no responsibility for any such delays.

Next release ...

Births and Deaths: March 2007 quarter will be released on 17 May 2007.

Statistics New Zealand: The first source of independent information for your key decisions.

Tables

The following tables can be downloaded from the Statistics New Zealand website in Excel 97 format. If you do not have access to Excel 97 or higher, you may use the [Excel file viewer](#) to view, print and export the contents of the file.

List of tables

- 1 Births, deaths and selected rates, 1991–2006
- 2 Live births by regional council, 1993–2006
- 3 Deaths by regional council, 1993–2006
- 4 Age-specific fertility rates, 1995–2006
- 5 Age-specific death rates, 1995–2006

Births and Deaths: December 2006 quarter

Table 1

**Births, Deaths and Selected Rates
1991–2006**

INFOS series	Live births ⁽¹⁾	Crude birth rate ⁽²⁾	Total fertility rate ⁽³⁾	Deaths	Crude death rate ⁽²⁾	Infant mortality rate ⁽⁴⁾	Natural increase ⁽⁵⁾
	VTBQ.SKTLZ VTBA.SKTLZ	DFMQ.SKHL DFMA.SKHL	DFMQ.SGHK DFMA.SGHK	VTDQ.S1T3 VTDA.S1T3	DMMQ.SPHL DMMA.SPHL	DMMQ.SRHL DMMA.SRHL	VTBQ.SJT VTBA.SJT
Quarter ended December							
1991	14,559	16.59	2.03	6,256	7.13	9.48	8,303
1992	14,211	16.03	1.98	6,186	6.98	7.04	8,025
1993	14,219	15.84	1.98	6,246	6.96	6.75	7,973
1994	13,968	15.35	1.93	6,187	6.80	6.80	7,781
1995	13,895	15.03	1.91	6,585	7.12	6.33	7,310
1996	13,966	14.88	1.90	6,392	6.81	6.44	7,574
1997	14,379	15.15	1.96	6,637	6.99	5.15	7,742
1998	14,208	14.86	1.96	6,312	6.60	5.52	7,896
1999	14,460	15.04	2.00	6,497	6.76	5.81	7,963
2000	13,579	14.04	1.90	6,508	6.73	5.67	7,071
2001	13,518	13.86	1.90	6,737	6.90	5.99	6,781
2002	13,527	13.64	1.89	6,692	6.75	5.77	6,835
2003	14,447	14.33	2.00	6,714	6.66	4.78	7,733
2004	14,140	13.87	1.95	7,207	7.07	6.01	6,933
2005	14,270	13.87	1.98	6,515	6.33	4.13	7,755
2006	14,348	13.80 P	1.99 P	6,578	6.33 P	5.16	7,770
Year ended December							
1991	59,911	17.14	2.09	26,389	7.55	8.25	33,522
1992	59,166	16.75	2.06	27,115	7.67	7.22	32,051
1993	58,782	16.45	2.04	27,100	7.58	7.16	31,682
1994	57,321	15.83	1.98	26,953	7.44	7.00	30,368
1995	57,671	15.69	1.98	27,813	7.57	6.66	29,858
1996	57,280	15.34	1.96	28,255	7.57	7.11	29,025
1997	57,604	15.23	1.96	27,471	7.26	6.54	30,133
1998	57,085	14.96	1.96	26,206	6.87	5.51	30,879
1999	57,053	14.87	1.97	28,122	7.33	5.56	28,931
2000	56,605	14.66	1.98	26,660	6.91	6.11	29,945
2001	55,799	14.36	1.97	27,825	7.16	5.30	27,974
2002	54,021	13.70	1.90	28,065	7.12	5.55	25,956
2003	56,134	14.00	1.95	28,010	6.99	4.93	28,124
2004	58,073	14.29	2.01	28,419	7.00	5.58	29,654
2005	57,745	14.08	2.00	27,034	6.59	5.11	30,711
2006	59,193	14.29 P	2.05 P	28,245	6.82 P	5.07	30,948

(1) Excludes late registrations under section 16 of the Births, Deaths, and Marriages Registration Act 1995. (Births that were not registered in the ordinary way at the time the birth occurred. Such registrations can occur as late as retirement age.)

(2) Live births or deaths per 1,000 mean estimated resident population.

(3) The average number of live births that a woman would have during her life if she experienced the age-specific fertility rates of a given period (usually a year). It excludes the effect of mortality.

(4) Deaths of children under one year of age per 1,000 live births.

(5) Excess of live births over deaths.

Note:

(a) Death data are based on deaths registered in New Zealand of New Zealand residents by date of registration.

(b) Birth data for the March, June, September and December 1998 quarters are based on the number of notifications received by the Department of Internal Affairs. All other birth data are based on live births registered in New Zealand to mothers resident in New Zealand by date of registration.

(c) For analytical purposes, registration-based data for 1998 is available on INFOS.

Symbol:

P provisional

Births and Deaths: December 2006 quarter

Table 2

**Live Births by Regional Council
1993–2006**

Regional council	December year													
	1993	1994	1995	1996	1997	1998	1999	2000	2001	2002	2003	2004	2005	2006
Northland region	2,456	2,272	2,422	2,240	2,213	2,177	2,157	2,123	1,994	1,919	2,024	2,069	2,069	2,244
Auckland region	18,395	18,052	18,402	18,958	19,027	18,455	19,286	19,673	19,406	19,327	20,112	20,956	20,747	21,331
Waikato region	5,967	5,829	5,877	5,551	5,920	5,523	5,843	5,386	5,501	5,229	5,440	5,583	5,666	5,590
Bay of Plenty region	3,808	3,645	3,682	3,746	4,000	3,712	3,833	3,690	3,615	3,536	3,620	3,833	3,771	3,842
Gisborne region	981	951	906	871	836	753	771	773	766	759	703	751	778	720
Hawke's Bay region	2,451	2,401	2,365	2,424	2,313	2,118	2,164	2,176	2,143	2,058	2,079	2,164	2,115	2,164
Taranaki region	1,741	1,676	1,617	1,537	1,500	1,538	1,496	1,426	1,367	1,308	1,373	1,319	1,410	1,453
Manawatu-Wanganui region	3,827	3,730	3,694	3,579	3,531	3,235	3,218	3,308	3,071	2,905	2,914	2,918	3,095	3,165
Wellington region	6,759	6,659	6,541	6,450	6,349	6,432	6,566	6,449	6,482	5,985	6,384	6,327	6,226	6,442
Tasman region	509	520	499	464	490	489	504	526	502	508	536	557	513	549
Nelson region	526	563	507	543	515	527	519	546	545	519	528	579	519	523
Marlborough region	524	491	543	469	539	427	471	472	441	415	459	479	473	484
West Coast region	524	484	471	491	428	403	403	361	396	330	334	399	338	390
Canterbury region	6,221	6,196	6,341	6,249	6,333	5,892	6,196	6,177	6,243	5,900	6,258	6,631	6,605	6,777
Otago region	2,476	2,415	2,366	2,314	2,251	2,110	2,146	2,145	2,065	2,072	2,044	2,173	2,152	2,150
Southland region	1,595	1,419	1,422	1,378	1,341	1,252	1,252	1,270	1,189	1,194	1,229	1,258	1,211	1,233
Region not specified/ area outside region	22	18	16	16	18	306	228	104	73	57	97	77	57	136
New Zealand	58,782	57,321	57,671	57,280	57,604	55,349	57,053	56,605	55,799	54,021	56,134	58,073	57,745	59,193

Note:
 (a) Birth data are based on live births registered in New Zealand to mothers resident in New Zealand by date of registration.
 (b) Registered births for 1998 are lower than expected, because of a small change to the rate at which births were registered during 1998.

Table 3

Deaths by Regional Council
1993–2006

Regional council	December year													
	1993	1994	1995	1996	1997	1998	1999	2000	2001	2002	2003	2004	2005	2006
Northland region	1,064	1,110	1,160	1,118	1,154	1,088	1,204	1,105	1,209	1,286	1,254	1,190	1,169	1,162
Auckland region	7,084	7,003	7,182	7,384	7,279	6,815	7,169	6,801	7,048	7,141	7,164	7,240	6,873	7,152
Waikato region	2,326	2,413	2,362	2,520	2,470	2,508	2,630	2,493	2,580	2,535	2,541	2,646	2,519	2,752
Bay of Plenty region	1,718	1,680	1,859	1,933	1,874	1,721	1,977	1,879	2,049	1,985	1,971	2,074	1,956	2,152
Gisborne region	423	389	451	405	417	358	436	387	376	401	411	361	376	436
Hawke's Bay region	1,260	1,243	1,215	1,239	1,265	1,172	1,292	1,203	1,235	1,255	1,328	1,219	1,276	1,253
Taranaki region	917	901	902	888	777	754	910	878	906	890	921	919	910	860
Manawatu-Wanganui region	1,929	1,937	1,971	1,996	1,825	1,812	1,972	1,901	1,992	1,919	1,909	1,966	1,837	1,967
Wellington region	2,959	2,770	2,999	3,001	2,993	2,772	2,943	2,797	2,909	2,922	2,929	2,924	2,744	2,826
Tasman region	279	283	301	314	275	251	278	299	307	287	290	308	315	341
Nelson region	331	344	360	350	349	315	349	352	344	392	368	382	344	365
Marlborough region	298	284	357	344	326	298	324	353	353	379	328	386	372	361
West Coast region	295	290	293	305	305	320	288	227	277	268	268	255	244	242
Canterbury region	3,867	3,951	3,993	4,001	3,806	3,625	3,904	3,637	3,830	3,975	3,869	4,178	3,816	4,016
Otago region	1,551	1,513	1,538	1,591	1,582	1,510	1,564	1,487	1,549	1,537	1,596	1,495	1,429	1,458
Southland region	790	834	861	847	758	763	764	785	805	831	787	792	723	766
Region not specified/ area outside region	9	8	9	19	16	124	118	76	56	62	76	84	131	136
New Zealand	27,100	26,953	27,813	28,255	27,471	26,206	28,122	26,660	27,825	28,065	28,010	28,419	27,034	28,245

Note: Deaths are based on deaths registered in New Zealand of New Zealand residents by date of registration.

Table 4

Age-specific Fertility Rates⁽¹⁾
1995–2006

December year	Age of mother (years)								Median age of mother (years)
	Under 15 ⁽²⁾	15–19	20–24	25–29	30–34	35–39	40–44	45+ ⁽³⁾	
1995	0.3	33.4	83.0	123.4	106.1	43.5	7.2	0.4	28.6
1996	0.2	33.0	81.2	119.2	105.3	44.6	8.0	0.4	28.8
1997	0.4	32.8	79.1	116.1	108.0	47.4	8.8	0.4	29.1
1998	0.2	29.2	75.3	110.6	107.1	48.1	8.5	0.4	29.3
1999	0.2	28.9	77.4	114.9	112.3	51.0	9.6	0.4	29.5
2000	0.2	28.2	77.5	113.5	113.1	52.5	10.1	0.4	29.7
2001	0.2	27.5	76.1	113.3	111.7	53.8	10.4	0.5	29.8
2002	0.2	25.6	70.3	106.0	110.6	55.0	11.1	0.5	30.1
2003	0.2	26.1	69.0	109.0	113.8	59.3	12.2	0.6	30.2
2004	0.2	27.3	71.0	109.6	119.7	61.1	12.3	0.6	30.3
2005	0.2	27.4	68.5	107.0	119.8	63.7	12.2	0.6	30.4
2006 P	0.2	28.4	72.2	107.1	122.7	65.3	12.6	0.7	30.3

(1) Per 1,000 mean estimated female population in each age group.

(2) Per 1,000 mean estimated female population aged 10–14 years.

(3) Per 1,000 mean estimated female population aged 45–49 years.

Note: Rates for 1998 are lower than expected, because of a small change to the rate at which births were registered during 1998.

Symbol:

P provisional

Table 5

Age-specific Death Rates⁽¹⁾
1995–2006

Age group (years)	December year											
	1995	1996	1997	1998	1999	2000	2001	2002	2003	2004	2005	2006 P
0–4	1.6	1.7	1.6	1.3	1.4	1.5	1.3	1.4	1.3	1.4	1.3	1.3
5–9	0.2	0.2	0.2	0.2	0.1	0.2	0.2	0.2	0.1	0.1	0.2	0.1
10–14	0.2	0.2	0.2	0.3	0.2	0.2	0.2	0.2	0.2	0.2	0.2	0.1
15–19	0.8	1.0	0.9	0.8	0.7	0.6	0.7	0.6	0.7	0.6	0.7	0.6
20–24	1.2	0.9	0.9	0.8	0.8	0.7	0.8	0.7	0.7	0.7	0.7	0.6
25–29	1.0	1.0	1.0	0.9	0.9	0.9	0.8	0.8	0.7	0.7	0.7	0.6
30–34	1.0	1.0	1.0	0.9	0.9	0.9	0.9	0.9	0.9	0.7	0.8	0.7
35–39	1.1	1.1	1.1	1.1	1.1	1.0	1.0	1.1	1.1	1.1	1.0	1.0
40–44	1.6	1.4	1.7	1.7	1.6	1.5	1.5	1.5	1.5	1.4	1.5	1.4
45–49	2.7	2.8	2.5	2.3	2.4	2.4	2.1	2.3	2.3	2.3	2.2	2.2
50–54	4.8	4.4	4.3	3.7	3.8	3.7	3.6	3.5	3.6	3.5	3.3	3.3
55–59	7.4	7.1	6.9	6.6	6.8	6.1	5.7	5.9	5.5	5.2	5.2	5.2
60–64	12.0	12.6	11.1	11.0	11.1	9.6	10.0	9.3	9.0	8.8	8.3	8.3
65–69	19.7	19.3	18.8	17.3	17.0	16.4	16.1	15.4	14.8	14.5	13.1	13.1
70–74	30.9	30.6	28.8	26.5	28.1	25.8	26.4	25.4	24.7	23.7	21.2	22.3
75–79	50.1	48.4	44.4	43.2	45.8	42.5	41.4	41.8	39.7	39.2	35.7	36.8
80–84	79.7	82.0	78.8	71.7	74.5	69.8	70.7	68.4	68.2	68.4	64.5	62.2
85–89	134.3	135.1	127.6	117.1	127.9	116.3	125.5	124.2	119.7	122.3	107.5	111.8
90+	246.4	246.7	235.9	216.6	244.2	214.0	234.4	235.6	228.7	229.7	209.6	223.7

(1) Per 1,000 mean estimated population in each age group.

Symbol:

P provisional